

# Maryland Medicine




The Maryland Medical Journal **Volume 15, Issue 4**

## 2015 Maryland Legislative Session

**MedChi's Legislative Agenda  
A Guide to Participating in the Legislative Process**

**Also Inside:  
Physician Volunteerism:  
Making a Difference One  
Patient at a Time**




Professional protection with a  
home field advantage.

**The only medical professional liability insurer created by Maryland Physicians for Maryland Physicians.**

There's a reason why more Maryland Doctors place their trust in the team at MEDICAL MUTUAL than in any other insurance company: no other insurer can match our winning record. When it comes to defending good medicine on our home turf, we're aggressive, we know the Maryland courtrooms, and we know the Maryland legislature. As a Doctor owned and directed company, we understand your needs and concerns better than anybody else. It all adds up to the strongest defensive strategy for your practice and professional reputation.

**MEDICAL  MUTUAL**  
*Liability Insurance Society of Maryland*



225 International Circle | Hunt Valley, Maryland 21030  
410-785-0050 | 800-492-0193

# I N S I D E



*This issue of Maryland Medicine includes a section for physicians to use as a how to guide for interacting with Maryland legislators.*

## Departments

President's Message Tyler Cymet, DO	5
CEO's Message Gene Ransom, III, Esq.	7
Editor's Corner Bruce M. Smoller, MD	9
NEW: Physician Volunteerism: Making a Difference One Patient at a Time	24
Word Rounds Barton J. Gershen, MD	28
The Last Word	30

## Features

<b>Introduction and Commentary on 2015 Legislative Agenda</b> Stephen J. Rockower, MD	11
<b>PARTICIPATING IN THE LEGISLATIVE PROCESS: A GUIDE</b>	
<b>Physicians to Make House Calls on Annapolis State House in 2015</b>	12
<b>MedChi's 2015 Legislative Agenda Outlined</b>	13
<b>Maryland Physicians Elected to Public Office in 2014: An Update</b>	14
<b>When the Maryland Legislature is in Session, Physician of the Day Needed</b>	14
<b>Communicating with Legislators</b>	15
<b>Component Medical Society's Legislative Internship Program Helps to Establish Relationships</b>	16
<b>Maryland General Assembly: A Reference List</b>	17
<b>Organizational Structure of Maryland's Legislative Branch</b>	21
<b>MedChi's Legislative Council: Monitoring State Legislation That Impacts Physicians, Practices &amp; Patients</b>	22
<b>MedChi's Blue Ribbon Commission: Examining the Future Role of the Physician</b> <i>A Correction</i>	23



Scan the code with your smart phone and download *Maryland Medicine* to your mobile device.



Your care team is now  
just a tap away.



DocbookMD is a **free benefit** for MedChi members.

DocbookMD has now made it easier than ever to engage and communicate with your non-physician colleagues in a new feature to our app called Care Team. With Care Team, physicians can invite members of the patient care team to join them on DocbookMD to communicate in a secure, fast and efficient way through their mobile device. Now, all of those caring directly for patients can share messages and

images like X-rays, EKGs and images of wounds or rashes wherever and whenever they need to. Simply download the app from either the App Store or Google Play and start building your Care Team.



For more questions, please visit [docbookmd.com](http://docbookmd.com) or you can contact us at 888-930-2048 or [info@docbookmd.com](mailto:info@docbookmd.com). The Care Team feature is only available with the latest app version of 5.0.



# Physicians and Advocacy



Tyler Cymet, DO

## PRESIDENT'S MESSAGE

*"If I am not for myself, who will be for me? But if I am only for myself, who am I? If not now, when?"*

~Ethics of the Fathers, 1:14

Physicians take the guiding principle "do no harm" seriously. This caution often transfers to other aspects of our lives. To engage in the political process and navigate the legislative system and public policy requires physicians to apply different guiding principles, however.

In the changing healthcare environment, where does the medical community draw the political line to protect the profession? Who will draw the line? When will the line be drawn? Politics is a process without a single answer or end.<sup>1</sup> Protection depends on continued vigilance.

Annapolis legislators, like insurance companies, often look for the most cost-effective options, which are not always the most effective or comfortable for the patients. Insurance companies, third-party payers, push for legislation focused on their interests. Healthcare providers, the second party that provides the procedure and expertise, should be guiding the care and the process. Physicians focus on the first-party payer, the patient.

MedChi has a long and rich history of being a leader in the development of healthcare standards for Maryland.<sup>2</sup> Advocacy is one of our most important functions. A collective voice carries more weight. The 2015 legislative agenda is broad and focuses on the health of the patients and the community or public, and the profession.

In 2015, MedChi will advocate for patient care by working to

- prevent underage use of tanning beds, which has been linked to a significant increase in skin cancer;

- increase incentives aimed at decreasing childhood obesity; and
- strengthen smoking laws and taxes (smoking causes entirely preventable diseases such as leukemia, bladder cancer, and lung cancer).

MedChi also will fight to maintain that all patients have the right to be seen by a physician who has completed adequate training with proper oversight.

Although physicians provide significant amounts of free care, the cost of administering care needs to be covered. Medicaid is a good example of necessary care that in many places is covered, but the pay scale is so low that it makes poor financial sense to provide adequate care. In its effort to end healthcare disparities, MedChi will continue to protect this valuable program and enhance Medicaid and other third-party payer physician reimbursements.

In today's legal environment, a single mistake can make physicians liable for amounts equal to everything they earn in their entire career. The damage cap needs to be maintained on non-economic damages to provide fair redress for patients without creating unfair incentives for people to game the system for personal gain. To protect physicians, MedChi will respond to the new legislation that looks to increase this cap and repeal the defense of contributory negligence.

MedChi will continue to protect the basic rights of physicians by monitoring legislation that draws physicians' licensing fees to other programs or delays obtaining licenses, including CDS licenses. In addition, MedChi will continue to track regulatory and discipline activities of the Board of Physicians.

The 2015 legislative agenda is extensive. MedChi is prepared and will be the voice of Maryland physicians during the 2015 General Assembly.

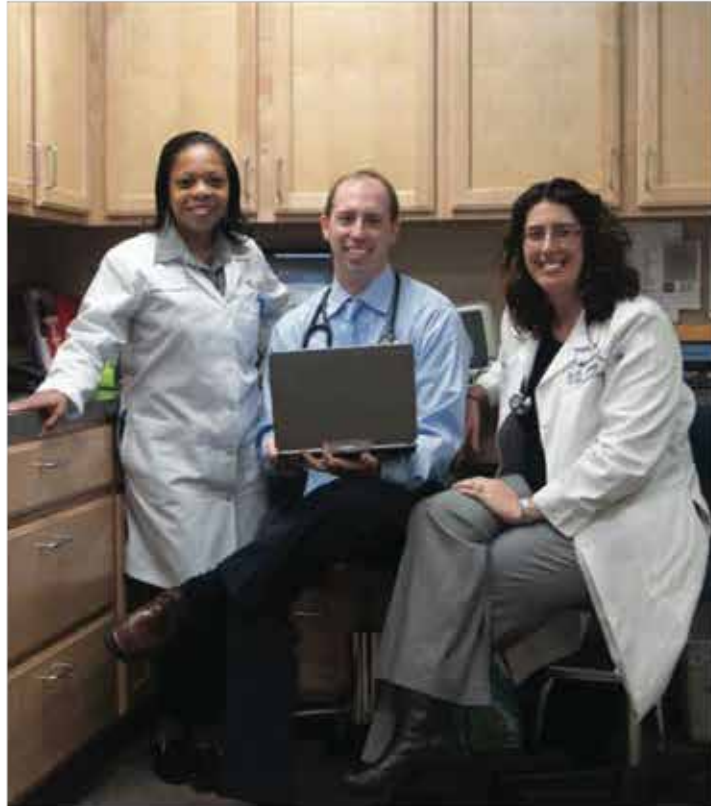
### References:

1. T. Cymet, "Playing politics with the professional politicians: What is the doctor's role?" *Maryland Medicine* 10(1): 17-18, 20 (2009).
2. D. Hexter, "Wannabe's," *Maryland Medicine* 12(1): 2 (2010).

*Providing  
legal representation  
in disability  
insurance denial  
&  
termination  
cases.*

LAW OFFICES  
**KARP FROSH**  
WIGODSKY & NORWIND, P.A.

Edward L. Norwind, Esq.  
Zachary A. King, Esq.  
lnorwind@karpfrosch.com • zking@karpfrosch.com  
301.948.3800 ■ KarpFrosch.com



CRISP is a non-profit health information exchange organization serving Maryland and the District of Columbia.

**Prescription Drug Monitoring Program**

*Monitor the prescribing and dispensing of drugs that contain controlled dangerous substances*

**Encounter Notification Service (ENS)**

*Be notified in real time about patient visits to the hospital, qualify for transitional care reimbursement*

**Query Portal**

*Search for your patients' prior hospital and medication records*

**Direct Secure Messaging**

*Use secure email instead of fax/phone for referrals and other care coordination*

To learn more about these free services, please contact MedChi at [info@medchiservices.org](mailto:info@medchiservices.org) or (888)507-6024  
Visit CRISP at [www.crisphealth.org](http://www.crisphealth.org)

# Budget Woes and Medicaid Cuts Will Be the Focus of the MedChi 2015 Session



## CEO'S MESSAGE

Gene Ransom, III, Esq.

MedChi was preparing for an all-out onslaught from our friends the malpractice plaintiffs' lawyers on several Maryland tort reform measures this upcoming session. The lawyers invested heavily in the campaign of Anthony Brown, and engaged the powerful lobbying firm Alexander & Cleaver to honcho the effort. But a funny thing happened on the way to the election—Anthony Brown lost, and pro-tort reform gubernatorial candidate Larry Hogan became only the third Republican elected governor in fifty years. I guess that is why we vote.

Clearly, the lawyers and their new lobbyists will not give up; however, their goal of repealing tort protections will be much harder to achieve. While MedChi's concerns about tort reform repeal may be eased, some new problems have arisen. Governor-elect Hogan was elected on a promise to cut fees and taxes. Furthermore, Hogan received a surprise shortly after winning the election—the outgoing administration announced the State budget is projected to have a deficit of more than \$600 million.

Given the fact Governor O'Malley chose to cut Medicaid payment to physicians as he left office, Governor-elect Hogan's promises, and the budget deficit, changes to Medicaid will be on the table this session. Medicaid is a large part of the budget—according to the Kaiser Foundation, Maryland is spending more than \$7.6

billion on Medicaid. Federal matching funds that were available multiplied the effect of the State's investment. However, those matching dollars will decrease next year, putting additional pressures on policy makers. The budget woes and the desire to cut taxes and fees will put one of MedChi's greatest achievements at risk.

During the last few years, MedChi worked to get a fee increase for Medicaid Evaluation and Management codes (E & M codes), which became effective on January 1, 2013. The increase was set to expire on July 1, 2015, until Governor O'Malley cut the rate to 87% of Medicare effective April 1, 2015. While we are unclear what the Hogan 2015 budget will do to the Medicaid fee increase, the increase is likely to be on the chopping block as the General Assembly considers the next fiscal year and the priorities of the new administration.

MedChi strongly believes the Medicaid rates should be kept at 100% of Medicare as a matter of public policy. Medicaid patients have problems finding a physician: The increased E & M codes will improve networks and access to care. Improving the network and increasing specialty visits should decrease use of emergency rooms and more costly options.

E & M codes are services provided in office settings in most cases. Increasing service in offices will have the long-term

effect of reducing Medicaid expenses in the more costly hospital setting. Limiting the reimbursement rate increase to primary care physicians will seriously damage the Medicaid program at the worst possible time. Physician participation is becoming especially critical as federal health system reform is expected to dramatically change the nature of the Medicaid population.

MedChi strongly believes that, although it may be tempting to cut Medicaid because of Maryland's predicted operating budget shortfall, physicians will drop out of Medicaid because of inadequate reimbursement. The loss of participating physicians would create significant barriers to patient access and ultimately increase the cost of care. The tremendous increase in enrollment that has occurred with the implementation of federal health care reform makes retention of this reimbursement policy essential. Maryland's ability to maintain an adequate provider network and ensure patient access to necessary services would be at risk. Maryland can solve the problem of physician shortages in the Medicaid program only by keeping the Medicaid funding increase for all specialties. The funding increase is important, not just to encourage private practice physicians to participate in the Medicaid program, but also to assist employed and hospital-based physicians who see so many Medicaid patients and often in emergency situations.

## EDITORIAL STATEMENT

Editorial Offices  
Montgomery County Medical Society  
15855 Crabbs Branch Way  
Rockville, MD 20855-0689  
Phone 301.921.4300, ext. 202  
Fax 301.921.4368  
sdantoni@montgomerymedicine.org

Advertising  
800.492.1056

Classified and Display Advertising Rates  
Veena Sarin  
301.921.4300,  
vsarin@montgomerymedicine.org

All opinions and statements of supposed fact expressed by authors are their own, and not necessarily those of *Maryland Medicine* or MedChi. The Editorial Board reserves the right to edit all contributions, as well as to reject any material or advertisements submitted.

Copyright © 2015. *Maryland Medicine*, The Maryland Medical Journal. USPS 332080. ISSN 1538-2656 is published quarterly by the Medical and Chirurgical Faculty of Maryland, 1211 Cathedral Street, Baltimore, Maryland 21201, and is a membership benefit. All rights reserved. No portion of this journal may be reproduced, by any process or technique, without the express written consent of the

publisher. Advertising in *Maryland Medicine* does not imply approval or endorsement by MedChi unless expressly stated.

*DISCLAIMER: Some articles may contain information regarding general principles of law. They are not intended as legal advice and cannot be substituted for such. For advice regarding a specific legal situation, consult an attorney licensed in the applicable jurisdiction and with appropriate training and/or experience in the legal area in question.*

# CONSIDERING EMPLOYMENT?



## Here are 10 Key Considerations

- 1 Do I need an *attorney*? How do I find the right one?
- 2 How will my *compensation* be determined? Salary plus bonus model? Output? Quality?
- 3 Will I *earn more or less* than in private practice?
- 4 Who is responsible for selling, buying, or leasing my *office and equipment*? What are the tax implications?
- 5 If I'm leaving a private practice, what are the *departure issues*? Can I take my current office staff with me? How much control will I have?
- 6 Who will pay for my *insurance*? Malpractice? Insurance Tail? Life? Disability?
- 7 How will my *quality of life* be affected? Coverage? Call schedule? Vacations?
- 8 What are my *hospital obligations*? Will I be expected to serve on hospital committees?
- 9 How will any *disputes* be handled?
- 10 How will a *non-compete clause* factor if I wish to later choose private practice? Whose patients are they?

MedChi is here to inform and guide you in making the best possible decision for you and your patients. Consider all aspects of the decision to enter into an employment agreement or to remain in an employed situation.

Visit MedChi for details at [www.medchi.org](http://www.medchi.org) or contact the Membership Department at 410-539-0872.

# MedChi

The Maryland State Medical Society



Follow us



# A Balanced Life



## EDITOR'S CORNER

Bruce M. Smoller, MD

This is the last Editor's Corner of 2014, and so I thought that I might, as a retrospective look, place the stressful items populating our professional lives on a balance scale with the pleasant, satisfying ones and take a look at where the tipping point falls.

Here go the stressful: CMS, lawyers, poor payments, insurers, Sunshine act, scope of practice nibblers, compounding, EHR, EHR, EHR, ICD10, 11, 12, 13, and upwards whenever they may come, consultant economists who think they are physicians, consultant business types who think they are economists, consultants of all types who think they *really* know medicine, hospital administrators who make enough money to retire a chunk of the national debt, government officials who believe we are crooks, wastrels and layabouts, bottom feeding lawyers who are allowed and encouraged to fee split to get clients what they absolutely, positively, without reservation DESERVE, top feeding lawyers who live off the bottom feeders, long, late hours, para professional fields some of whose members think they know as much as physicians, call themselves doctors and physicians and think they can do the work of physicians, and, oh, about a hundred more that space considerations and considerations of readers time keep me from putting into print.

One of the nice things about being Editor is that I get to do things like put what I find objectionable into print, assuming, always, that what I find objectionable has a validity for the rest of my colleagues. A bit of hubris, perhaps, but I think most of us would agree with the list above and have a trove of many more piques just waiting to see the same sunshine.

Well, the scales are screaming under the weight of these objectionables. The whole balance is threatening to topple. Let's throw in to that other cup the things that might save the balance from toppling under the weight of our stressors. Ok...here goes...into the other cup goes...our patients and the chance to treat them. That's it....that's all....and the balance is now righted. We are lucky, in that our lives are given meaning and substance by the chance to help our patients. At least that's what I hear from many of our colleagues. Maybe not day to day or even week to week, but in the end, we are the fortunate ones...our lives have meaning, and hopefully that outweighs all the miserable rules, and petty bureaucrats, and venal lawyers and sad little consultants who inhabit our lives these days.

I hope you will indulge me with reprinting a message I first sent out seven or eight years ago. I like it, and try to send it out again about every other holiday season.

It reflects, I think, the sentiments expressed above.

*As we reflect on the hard work, the achievements and the disappointments, the gains and losses, the triumphs and tragedies of this waning year, I hope you find special joy in the warmth of family and friends (human and otherwise) and a singular pleasure in that relationship allowed us by virtue of our profession....the amity and friendship, trust and respect of our patients. I believe this is best summed up by the words uttered by Doctor Archibald "Moonlight" Graham in the movie "Field of Dreams."*

*After being magically transformed into a young man, he is allowed to play ball again. He never was at bat during his short baseball career, and now he is at the plate ready to receive the pitch. But he spies the young daughter of Ray Kinsella choking to death and without hesitation "Moonlight" crosses that enchanted boundary between fantasy and reality, and instantly becomes an old man again.....a physician, not a ball player. He saves the young girl but never gets to hit, even in fantasy.*

*When Ray Kinsella notes that the baseball career and lifelong dream of Moonlight Graham had lasted only five minutes and would therefore be considered a tragedy by many people, Doc Graham replied, "Son, if I'd only got to be a doctor for five minutes, now that would have been a tragedy."*

*It is the spirit of that thought, especially when all the legislative and regulatory chips are down, that will give perspective to our work and meaning to our days in the year ahead.*

I hope you had a splendid holiday season and will have, if not a stress-free, a balanced new year.

**We are a partner in  
VA's efforts to  
END VETERAN  
HOMELESSNESS**

**Help for Homeless Veterans**  
**877-4AID-VET**  
va.gov/homeless (877) 424-3838

# Just what the doctor ordered.



MedChi has partnered with Maryland Rx Card to provide savings to your patients of up to 75% on prescription drugs at over 56,000 retail pharmacies

- ✓ Free to all patients.
- ✓ Cards are pre-activated, no sign-up forms needed.
- ✓ Discounts on brand and generic medications.
- ✓ Helps patients that have high deductible plans or are uninsured.
- ✓ Reduces patient callbacks.
- ✓ Enhances physician's ability to treat patients with drugs that may not otherwise be affordable.

For more information or to order free hard cards please contact:

**Jaclyn Z. Rodriguez • Development Director**  
(410) 539-0872 Ext: 3315 • [jrodriguez@medchi.org](mailto:jrodriguez@medchi.org)

 **MARYLANDRxCARD.com**

Free Statewide Prescription Assistance Program

**facebook** /MarylandRxCard

**twitter** @MarylandRxCard

# Introduction

Stephen J. Rockower, MD

MedChi has been hard at work to formulate the Legislative Agenda for 2015. The session began in Annapolis on January 12 and runs for ninety days. With the November 2014 election, there was significant turnover at the State House (and Governor's mansion), and we are poised to make great strides to foster healthy living, promote fairness in tort reform, and ensure Marylanders have access to highly trained practitioners of the healing arts. The news has been full of events in Washington, but events in Annapolis have much more influence on our daily lives.

This issue of *Maryland Medicine* is designed to help our members interact with the legislative process. It has been said, "If you are in Medicine, you are in Politics." Between the Affordable Care Act, SGR, HIPAA, Accountable Care Organizations, and even the new waiver here in Maryland, every physician needs to be informed about the changes that are occurring. They will affect you and your patients! And, with that information, each and every physician can interact with legislators to promote our agenda.

Our overall agenda is presented on page 13, but there are a few significant points to cover here:

- We are strongly in favor of the repeal of the Sterile Compounding Law, conceived hastily after the disaster of a few years ago. While some regulation of compounding is necessary, the law as written went overboard in sweeping almost all physicians into restrictive practices. More thinking needs to be done to make this right. Negotiations have taken place to allow this to happen, but we must see it through in the Session.
- We continue to monitor the Waiver Program in Maryland and its impact on physicians.
- We continue to advocate for payment for Medicaid E&M codes to be paid to all physicians, and will work to avoid cuts in that program.
- We continue to oppose efforts to increase caps on damage awards.

We have listed all the legislators of Maryland, along with their email addresses and phone numbers. You will notice we now have more than one physician in the legislature, as three more physicians (Clarence Lam, Jay Jalisi, and Terri Hill) were elected to join Dr. Dan Morhaim. Along with biographic information of our new physician members, we are including information on other physicians who have secured political positions. In addition, more than 40 percent of the legislators are newly elected to their jobs, either as new delegates, or as new senators, having moved up. It behooves us to interact with them NOW to inform them of our issues and our plans to improve health care here in Maryland. Laying that groundwork is essential to promoting and achieving the MedChi agenda.

Also included in this issue are some pointers from our lobbyists, Pam Kasemeyer and Steve Wise, on how to speak with legislators. Legislators do want to hear from you, and your voice makes a huge difference in their thinking. We have also listed the upcoming lobby days for each of Maryland's components. On each lobby day in the session, we descend on Annapolis to talk to our legislators. Typically, we have an orientation to discuss the issues of the day, break out for appointments with legislators with our talking points, and get introduced from the floor during the formal session. There is often lunch. You can be back in your office by 2:00 p.m., if you want. Some meetings are on Monday, when there is an evening session.

## Editor

Bruce M. Smoller, MD

## Editorial Board

John W. Buckley, MD  
Tyler Cymet, DO  
Barton J. Gershen, MD  
(Editor Emeritus)

Mark G. Jameson, MD, MPH  
Stephen J. Rockower, MD  
Anne Sagalyn, MD

## Director of Publications

Susan G. D'Antoni

## Managing Editor

Susanna M. Carey

## Production

Nicole Legum Orders

## MedChi, The Maryland State Medical Society

### CEO

Gene M. Ransom, III, Esq.

### President

Tyler Cymet, DO

### President-Elect

Brooke M. Buckley, MD

### Immediate Past President

H. Russell Wright, Jr., MD

### Secretary

Benjamin Lowentritt, MD

### Treasurer

Stephen J. Rockower, MD

### Speaker of the House

Michele Manahan, MD

### Vice Speaker of the House

Benjamin Z. Stallings, MD

### AMA Delegation Representative

Thomas E. Allen, MD

### Anne Arundel County Trustee

James J. York, MD

### Baltimore City Trustee

Anuradha Reddy, MD

### Baltimore County Trustee

Gary W. Pushkin, MD

### Montgomery County Trustee

Shannon P. Pryor, MD

### Prince George's County Trustee

Vacancy to be filled

### Eastern Group Trustee

Michael P. Murphy, MD

### Southern Group Trustee

Howard M. Haft, MD

### Western Group Trustee

J. Ramsay Farah, MD, MPH

### Trustee at Large

Vacancy to be filled

### Trustee at Large

Stephen J. Rockower, MD

### Specialty Society Trustee

Benjamin H. Lowentritt, MD

### IMG Section Trustee

Ambadas Pathak, MD

### Resident Section Trustee

Vacancy to be filled

### Medical Student Section Trustee

Taylor T. DesRosiers

### Bylaws Council Co-Chairs

Shannon P. Pryor, MD and Joneigh Khaldun, MD

### Communications Council Co-Chairs

Bruce M. Smoller, MD

### Legislative Council Co-Chairs

Gary Pushkin, MD and Stephen Rockower, MD

### Medical Economics Council Co-Chairs

Loralie Ma, MD and Francisco A. Ward, DO

### Medical Policy Council Co-Chairs

Ramani Peruvemba, MD and David Safferman, MD

### Operations Council Co-Chairs

Richard Scholz, MD and Betty Wang, DO

## Physicians to Make House Calls on Annapolis State House in 2015

During the 2015 legislative session, MedChi's component medical societies will assemble at MedChi's Annapolis office to hold their annual legislative meetings, and then visit with their county legislative delegations. Please join your component society in Annapolis to visit with legislators to discuss issues important to MedChi physicians. For more information, contact your component society or MedChi in Annapolis at 410.539.0872, ex. 6001.

<b>Baltimore County</b>	<b>February 25, 2015 8:00am</b>
<b>Baltimore City</b>	<b>February 25, 2015 8:00am</b>
<b>Harford County</b>	<b>February 25, 2015 8:00am</b>
<b>Practice Administrators</b>	<b>February 26, 2015 8:00am</b>
<b>Anne Arundel County</b>	<b>March 2, 2015 5:00pm</b>
<b>Prince George's County</b>	<b>March 2, 2015 5:00pm</b>
<b>Howard County</b>	<b>March 2, 2015 5:00pm</b>
<b>Montgomery County</b>	<b>March 4, 2015 8:00am</b>
<b>Southern Maryland</b>	<b>March 11, 2015 8:00am</b>
<b>Students and Residents</b>	<b>March 16, 2015 5:00pm</b>
<b>MedChi Alliance</b>	<b>TBD</b>
<b>Rural Component Societies</b>	<b>TBD</b>

Rounding out our issue are messages from our President, Tyler Cymet, DO, our Executive Director, Gene Ransom, and our Editor in Chief, Bruce Smoller, MD. Of course, no issue would be complete without Dr. Gershen's Word Rounds column, which wonderfully relates to our legislative theme.

Numbers always matter, and we need your help. MedChi is always looking for physicians to serve on the Legislative Council and to help in our efforts to promote and advocate for physicians and our patients. Every physician needs to be involved to effect change in Annapolis. Benjamin Franklin said at the signing of the Declaration of Independence, "We must all hang together, or assuredly we shall all hang separately." Contact the chairs of the Legislative Council (Dr. Gary Pushkin, gpush@comcast.net, or myself, DrRockower@gmail.com) to lend a hand. You can also help by being a "Doctor of the Day" during the legislative session in Annapolis. Contact Stephanie Wisniewski, swisniewski@medchi.org, for more information. We need to work together for the betterment of all.

*Stephen J. Rockower, MD, is an orthopaedist practicing in Rockville, MD. He is president-elect of Montgomery County Medical Society, and co-chair of MedChi's Legislative Council. He can be reached at drrockower@cordocs.com.*

Don't put your practice on the line, reduce your risks.



Practicing medicine has enough risks, compliance shouldn't be one of them.

Private practice physicians with patients on Medicare, Medicaid, and other federal healthcare programs are required to have an effective compliance program under the Affordable Care Act (ACA).

Reduce the risks to your practice by establishing a comprehensive compliance program. First Healthcare Compliance™ helps reduce risks with an affordable, 'single source' cloud-based compliance solution for private practice physicians that addresses HIPAA and every important element of a compliance program.

**Don't put your practice at risk, start complying today!**



Achieve Peace of Mind  
Protect Your Practice™

For a FREE Demonstration Contact First Healthcare Compliance™ | 888.54.FIRST | info@1sthcc.com | www.1sthcc.com

# 2015 Legislative and Regulatory Agenda For Maryland Physicians and Their Patients

*The mission of MedChi, The Maryland State Medical Society, is to serve as Maryland's foremost advocate and resource for physicians, their patients and the public health. To that end, during the 2015 General Assembly Session, MedChi shall work on the following objectives:*

## Advocate for Patients:

### Defend the Scope of Medical Practice So Patients Are Seen By a Physician:

MedChi will fight to ensure that all patients have access to physicians and that physician extenders have appropriate training and physician oversight. Individuals newly insured through ACA implementation has placed unprecedented demands on the health care system as newly insured individuals seek physicians. It is critical that patients have access to physicians and that non-physicians do not use increased demand to inappropriately increase their scope of practice.

### Repeal Maryland's Sterile Compounding Law:

MedChi will work to ensure patients have appropriate access to vaccines and medications administered in their physician's office by repealing Maryland's overly restrictive sterile compounding law.

### Protect Medicaid and the Uninsured:

MedChi will work to incentivize physician participation and to protect the integrity of the Medicaid program, including the protection of enhanced E&M payment for all physicians who serve Medicaid enrollees. MedChi will also work to ensure that Medicaid can serve the significant number of newly enrolled patients and that an adequate safety net remains for individuals who remain uninsured.

### Reform Unfair Insurance Practices:

MedChi will work to reform unfair insurance practices by supporting initiatives which:

- Prevent insurance carriers from effectively reducing payment via credit cards.
- Prevent workers compensation insurers from limiting a physician's right to dispense medications to an injured worker.
- Prevent insurance companies from denying payment for preauthorized services because they later determine that a service is experimental or not FDA approved.

## Advocate for Physicians:

### Defend Physician Rights:

MedChi will work to protect Maryland's physicians by:

- Addressing laws which direct physician license fees to other programs;
- Monitoring the regulatory and disciplinary actions of the Board of Physicians;
- Addressing delays in obtaining CDS licenses from the Department of Health & Mental Hygiene

### Strengthen Medical Liability Reform:

MedChi will continue to strongly oppose trial lawyer attempts to increase the "cap" on damages in medical malpractice cases and to abolish the defense of contributory negligence; support efforts to establish a pilot project for specialized health courts and to limit repeated continuances in medical malpractice cases; and otherwise work to protect and strengthen the legal liability environment for physicians in Maryland.

### Enhance Physician Payment and Insurance Reform:

MedChi will continue its efforts to improve Maryland's payment climate with these initiatives:

- Work to assure that gain-sharing mechanisms and other payment mechanisms for incentivizing broad system reform are developed through a stakeholder process that includes broad physician participation and have a positive impact on physicians.
- Remove the sunset provision for the Assignment of Benefit law making it a permanent requirement for insurance carriers.

## Advocate for Public Health:

### Protecting Maryland's Children:

MedChi will support initiatives to protect children including:

- The support of initiatives to address childhood obesity and efforts to incentivize the consumption of water including a reduction of the sales tax on bottled water.
- The support of efforts to ban minors' use of commercial tanning beds.

### Ending Health Disparities:

Continued support of legislative and regulatory initiatives to reduce health disparities.

### Making Maryland a Tobacco Free State:

MedChi will advocate for continued increases in the Tobacco Tax in order to discourage smoking and to help fund Medicaid's expansion and maintain enhanced E&M payment for all physicians serving Medicaid enrollees. MedChi will also support legislation prohibiting the sale of tobacco products by businesses which provide health care or dispense medications.

### Toxic Chemical Exposure:

MedChi will support the adoption of policies and regulations that provide a physician who is treating a person suspected of exposure to toxic chemicals access to information regarding the chemicals and will oppose efforts to restrict a physician's ability to appropriately use the information to protect the public health and prevent further exposure.

# Maryland Physicians Elected to Public Office in 2014: An Update

*Maryland was fortunate to have several physicians running for public office in local, state, and national elections, and many of them won! Please join Maryland Medicine in congratulating the following physicians elected to represent the public. Please take some time to become familiar with the physician senators, delegates, and local officers elected on November 4, 2014.*



## **Mark Edney, MD**

Elected to the Wicomico County Republican Central Committee  
He is a urologist at Peninsula Urology Associates in Salisbury.



## **Clarence Lam, MD**

Elected to the House of Delegates, District 12  
He is a board-certified physician in preventive medicine at the Johns Hopkins Bloomberg School of Public Health, and serves as the assistant program director of the preventive medicine residency program.



## **Andy Harris, MD**

Reelected to the U.S. House of Representatives, Congressional District 1  
He is an anesthesiologist from Baltimore.



## **Dan Morhaim, MD**

Reelected to the Maryland House of Delegates, District 11  
From Baltimore, he has practiced emergency and internal medicine, and is on the faculty at the Johns Hopkins Bloomberg School of Public Health and the University of Maryland Medical School.



## **Terri Hill, MD**

Elected to the Maryland House of Delegates, District 12  
She is a plastic and reconstructive surgeon with a practice in Columbia, Maryland.



## **Eric Wargotz, MD**

Elected to Orphan's Court, Queen Anne's County  
He is a founder and managing partner at Elliott & Wargotz Pathologists, LLC, and a clinical professor of pathology at George Washington University School of Medicine.



## **Jay Jalisi, MD**

Elected to the Maryland House of Delegates, District 10  
He is an ear, nose, and throat physician who currently works with nonprofit organizations.

## **When the Maryland Legislature is in Session, Physician of the Day Needed**

Looking for a unique way to be close to the legislative action in Annapolis? MedChi is seeking your help in staffing the First Aid Room in Annapolis for the legislative session (January 14 through April 13, 2015). The First Aid Room, located in the basement of the State House, is equipped with oxygen, hospital bed, wheelchair, crutches, thermometers, stethoscope, and blood pressure cuffs. A nurse is also on the premises every day, and rarely do you encounter anything more than colds or the flu, so the Physician of the Day can spend some time in the chambers observing the Senate and House conducting the work of our state government. There are also a variety of over-the-counter medications provided, including aspirin, cough and cold preparations, and antacids. Volunteers are asked to bring their own prescription pads in the event treatment requires prescribed medication.

Please take a day to help with this project. Emeritus physicians with active licenses are encouraged to participate. It's a great way

to see our legislative system at work, and it's actually fun and very interesting. A schedule of hearings and meetings dealing with health-related issues is posted in the First Aid Room each day, and volunteers are encouraged to sit in on those meetings.

Volunteers may wish to speak with the senator or delegates from their own districts while serving in this capacity, in which case Stephanie Wisniewski in the MedChi Annapolis office would be helpful in making the connection. Stephanie will provide briefing materials to aid volunteers in speaking knowledgeably to their legislators about MedChi agenda items.

The following time slots throughout the session need to be staffed: Monday evenings from 5–9 p.m.; Tuesdays, Wednesdays, and Thursdays from 9 a.m.–3 p.m.; and Fridays from 9 a.m.–1 p.m. (most legislators leave after lunch on Friday).

If you are interested in participating, please contact Stephanie Wisniewski at 410.539.0872, ext. 6001, or [swisniewski@medchi.org](mailto:swisniewski@medchi.org).

# Communicating with Legislators

Pam Metz Kasemeyer, Esq., and J. Steven Wise, Esq.

## How Can You Get Involved?

- Contact your delegates and senators in the Maryland General Assembly, and Representative & Senator in Congress on important health care issues.
- Visit MedChi's online Legislative Action Center at <http://capwiz.com/medchi/state/main/?state=MD> to get in touch with your legislators and sign up for action alerts!

## The Do's of Effective Communications:

- **Contact MedChi and/or your component medical society** to learn about MedChi's 2015 Legislative Agenda, and how to get involved in grassroots legislative efforts.
- **Identify clearly** the subject or subjects in which you are interested, not just House and Senate bill numbers.
- State why you are concerned about an issue or issues. **Sharing your own personal experience**, particularly as a member of the medical community, is excellent supporting evidence. Explain how you think an issue will affect patients, the medical profession, your community, or family.
- **Restrict yourself to one, or at most, two topics.**
- **Put your thoughts in your own words.** If a member of the Legislature received numerous letters with nearly identical wording, he or she may discount them as part of an organized pressure campaign.
- Try to **establish an ongoing relationship** with your delegates and senators, which will give you more influence as a constituent.

- **Get involved early** in the legislative process. Communicate while committees are considering legislation, as well as when legislation is on the House and Senate floor.
- Find out the **committees and subcommittees** on which your delegates and senators serve. Members of the State Legislature have much more influence over legislation within their committees' and subcommittees' jurisdiction.

## The Don'ts of Effective Communication:

- **Don't ever threaten.** Don't imply "I'll never vote for you unless you do what I want." Present the best arguments in favor of your position and ask for consideration in a respectful manner.
- **Don't pretend to wield vast political influence.** Contact your member as a constituent, not a self-appointed spokesperson for the medical community.
- **Don't use trite phrases or clichés.** Trite phrases or clichés can make your letter sound mass-produced when it isn't. Just be yourself.
- **Don't ever link campaign contributions to legislative support.**

*Pam Metz Kasemeyer, Esq. and J. Steven Wise, Esq. are lobbyists for MedChi and are principals with the firm Schwartz, Metz & Wise. They can be reached by calling 410.244.7000 or by email at [swise@smwpa.com](mailto:swise@smwpa.com) and [pmetz@smwpa.com](mailto:pmetz@smwpa.com).*

## Five Steps to Determine Who Represents You in Annapolis and in Congress!

These five easy steps will help you become a more active grassroots constituent:

1. Go to [www.medchi.org](http://www.medchi.org),
2. Click on the Law and Advocacy tab along the top of the page,
3. Scroll down to the Legislative Action Center,
4. Insert your home address zip code in the space provided  
(The district in which you vote is determined by your home address.), and
5. Enter your street address.

Voila! Your elected officials for national and state offices will be displayed. From here, you can compose messages to your elected officials on important legislative initiatives. When a Call to Action exists, you can use the talking points displayed to compose your message.

If you do not live and work in the same district, use the same process to determine the legislative district for your office location. Knowing the legislators who represent your patients is also important.

# Component Medical Society's Legislative Internship Program Helps to Establish Relationships



On New Year's Eve, Dr. Natasha Herz, an ophthalmologic surgeon, welcomed newly elected Maryland Delegate, Andrew Platt (District 17), to her office in Kensington, Maryland. Dr. Herz is participating in Montgomery County Medical Society's (MCMS) Internship Program and hosting the freshman delegate,

who represents Montgomery County, as an intern, or shadow.

Started more than ten years ago, the MCMS Legislative Internship Program is an effort to enhance dialogue with community leaders and elected officials about important medical, patient care, and medical practice issues by exposing the concerns of physicians through firsthand experience for interns.

Interns in the past have been invited from business; politics, legislative, judicial, and regulatory organizations; media; and patient advocacy or social service agencies. In 2015, with health system reform continuing to be at the forefront at federal and state levels, MCMS invited the newest class of state legislators to participate as interns. Participating physicians represent the gamut of medical fields, from primary care (family practice, internal medicine, and pediatrics) to surgery and a host of specialties.

Interns spend a minimum of a half-day with a physician. They are encouraged to ask questions and comment freely during their visits with physicians. Physicians may determine whether interns will be involved in patient care, and patients are asked to sign the advisory indicating they approve of the involvement of the intern. Interns are asked to sign a confidentiality agreement before the internship begins.

The intern experience was found to be valuable for both Delegate Platt and Dr. Herz. Delegate Platt was born and raised in Gaithersburg, and he ran for delegate to bring common sense solutions to Annapolis. The sort of "hands-on" experience that he gained in this internship opportunity will help him. According to Delegate Platt, "I found the experience incredibly helpful. It was very educational to shadow Dr. Herz and to understand how the public policies we formulate in Annapolis impact Dr. Herz, ophthalmologists, and other doctors in their daily efforts to heal people."

Delegate Platt thinks it would be important for all freshmen legislators to do an internship in a physician's practice, noting that "it's integral for elected policymakers to understand the routines, needs, and relationship between policy making and the ability for doctors to do their jobs and heal their patients. I learned that that the work legislators do has a very big impact on the work of doctors. From regulatory policy to fee structures, doctors operate under strict rules and regulations."

Dr. Herz thought the experience was extremely valuable. "I think this was an excellent starting point to form a relationship that can be cultivated over the years. I was very impressed that he was willing to spend his New Year's Eve in such a 'grassroots' way, getting to know what our real issues are in the trenches. Also I think it's genius to get in with the new delegates at the very beginning of their first terms. They're open to new relationships."

Intern and physician were so pleased with the experience that Delegate Platt invited Dr. Herz to spend the day with him in Annapolis. Delegate Platt hopes to give Dr. Herz "an up-close view of just how much legislators must know on an array of topics and the various and often competing interests from constituents, policy stakeholders, and other groups involved in the political and policy process."

The MCMS internship program is just one of the grassroots legislative efforts that is coordinated by a MedChi component society. Contact your component society or MedChi to find out if an internship program exists in your area, or how you can get involved in other grassroots initiatives.

As Tip O'Neill said, "All politics is local."

*Are you looking for a financial advisor who understands your needs and respects your decisions? You'll find one at*  
**Asset Management Concepts, Inc.**

Our advisors are consultants, rather than salespeople. We work to provide you with a practical solution to wealth management, taking your personal values into consideration as we make our recommendations.

We are a financial planning firm specializing in the needs of doctors and medical professionals. Contact us through email ([james.segal@amciinvestments.com](mailto:james.segal@amciinvestments.com)) or phone (410-486-2093) to learn more about our financial services and to schedule a complimentary consultation.

**ASSET**  
MANAGEMENT CONCEPTS, INC.

106 Old Court Road, Suite 301  
Baltimore, Maryland 21208

**410-486-2093**

**WWW.AMCIINVESTMENTS.COM**

Securities offered through Cambridge Investment Research, Inc., a broker/dealer. Member FINRA/SIPC. Financial planning offered through Asset Management Concepts, Inc., a Registered Investment Advisor. Investment Advisor Representative, Cambridge Investment Research Advisors, Inc., a Registered Investment Advisor. Cambridge and Asset Management Concepts, Inc. are not affiliated. V.CIR.0714



# MARYLAND GENERAL ASSEMBLY: REFERENCE LIST

Consider pulling this section out and posting in your practice for easy access.

## MARYLAND SENATORS

Last Name	First Name	District	County	Party	Phone	Fax	Email	Committee Assignment
Edwards	George C.	1	Allegany, Garrett & Washington	R	410-841-3565	301-858-3552	george.edwards@senate.state.md.us	Budget and Taxation
Shank	Christopher B.	2	Washington	R	410-841-3903	301/858-3940	christopher.shank@senate.state.md.us	Judicial Proceedings
Young	Ronald N.	3	Frederick & Washington	D	410/841-3575	410/841-3193	ronald.young@senate.state.md.us	Education, Health & Environmental Affairs
Hough	Michael	4	Frederick & Carroll	R	410-841-3704		michael.hough@senate.state.md.us	Judicial Proceedings
Getty	Joseph M.	5	Baltimore & Carroll	R	410/841-3683	410-841-3729	joseph.getty@senate.state.md.us	Budget and Taxation
Salling	Johnny	6	Baltimore	R	410-946-3587		johnnyr.salling@senate.state.md.us	Education, Health & Environmental Affairs
Jennings	J.B.	7	Baltimore & Harford	R	410/841-3706	410/841-3750	jb.jennings@senate.state.md.us	Finance
Klausmeier	Katherine A.	8	Baltimore	D	410/841-3620	410/841-3085	katherine.klausmeier@senate.state.md.us	Finance
Bates	Gail H.	9	Carroll & Howard	R	410-841-3671	301-858-3571	gail.bates@senate.state.md.us	Education, Health & Environmental Affairs
Kelley	Delores G.	10	Baltimore	D	410/841-3606	410/841-3399	delores.kelley@senate.state.md.us	Finance
Zirkin	Bobby A.	11	Baltimore	D	410/841-3131	410/841-3737	bobby.zirkin@senate.state.md.us	Judicial Proceedings, Chair
Kasemeyer	Edward J.	12	Baltimore & Howard	D	410/841-3653	410/841-3091	edward.kasemeyer@senate.state.md.us	Budget and Taxation, Chair
Guzzone	Guy	13	Howard	D	410-841-3572	410-841-3438	guy.guzzone@senate.state.md.us	Budget and Taxation
Montgomery	Karen S.	14	Montgomery	D	410-841-3625	301-858-3618	karen.montgomery@senate.state.md.us	Education, Health & Environmental Affairs
Feldman	Brian J.	15	Montgomery	D	410/841-3169	410-841-3607	brian.feldman@senate.state.md.us	Finance
Lee	Susan C.	16	Montgomery	D	410-841-3124	301-858-3424	susan.lee@senate.state.md.us	Judicial Proceedings
Kagan	Cheryl C.	17	Montgomery	D	410-841-3134		cheryl.kagan@senate.state.md.us	Education, Health & Environmental Affairs
Madaleno	Richard S.	18	Montgomery	D	410/841-3137	301-858-3676	richard.madaleno@senate.state.md.us	Budget and Taxation, Vice-Chair
Manno	Roger P.	19	Montgomery	D	410-841-3151	301-858-3740	roger.manno@senate.state.md.us	Budget and Taxation
Raskin	Jamie	20	Montgomery	D	301/858-3634	410/841-3166	jamie.raskin@senate.state.md.us	Judicial Proceedings
Rosapepe	Jim	21	Anne Arundel & Prince George's	D	410/841-3141	410/841-3195	jim.rosapepe@senate.state.md.us	Education, Health & Environmental Affairs
Pinsky	Paul G.	22	Prince George's	D	301/858-3155	410/841-3144	paul.pinsky@senate.state.md.us	Education, Health & Environmental Affairs, Vice-Chair
Peters	Douglas J.J.	23	Prince George's	D	301/858-3631	410/841-3174	douglas.peters@senate.state.md.us	Budget and Taxation
Benson	Joanne C.	24	Prince George's	D	410/841-3148	301-858-3149	joanne.benson@senate.state.md.us	Finance
Currie	Ulysses	25	Prince George's	D	410/841-3127	301-858-3733	ulysses.currie@senate.state.md.us	Budget and Taxation
Muse	C. Anthony	26	Prince George's	D	410-841-3092	301-858-3410	anthony.muse@senate.state.md.us	Judicial Proceedings
Miller	Thomas V.	27	Calvert & Prince George's	D	410-841-3700	410/841-3910	thomas.v.mike.miller@senate.state.md.us	President of the Senate
Middleton	Thomas McLain	28	Charles	D	410-841-3616	301-858-3682	thomas.mclain.middleton@senate.state.md.us	Finance, Chair
Waugh	Steve	29	Calvert, Charles & St. Mary's	R	410-841-3673		Steve.Waugh@senate.state.md.us	Education, Health & Environmental Affairs
Astle	John C.	30	Anne Arundel	D	410/841-3578	410/841-3156	john.astle@senate.state.md.us	Finance, Vice-Chair
Simonaire	Bryan W.	31	Anne Arundel	R	410/841-3658	410/841-3586	bryan.simonaire@senate.state.md.us	Education, Health & Environmental Affairs
DeGrange	James E.	32	Anne Arundel	D	410/841-3593	410/841-3589	james.degrange@senate.state.md.us	Budget and Taxation
Reilly	Edward	33	Anne Arundel	R	410/841-3568	410/841-3067	edward.reilly@senate.state.md.us	Finance
Cassilly	Bob	34	Cecil & Harford	R	410-841-3158		Bob.Cassilly@senate.state.md.us	Judicial Proceedings
Norman	H. Wayne	35	Harford	R	410-841-3603	410-841-3190	wayne.norman@senate.state.md.us	Judicial Proceedings
Hershey	Stephen S.	36	Caroline, Cecil, Kent & Queen Anne's	R	410/841-3639	410-841-3762	steve.hershey@senate.state.md.us	Finance
Eckardt	Adelaide C.	37	Caroline, Dorchester, Talbot & Wicomico	R	410-841-3590	410-841-3299	adelaide.eckardt@senate.state.md.us	Budget and Taxation
Mathias	Jim	38	Somerset, Wicomico & Worcester	D	410/841-3645	410/841-3006	james.mathias@senate.state.md.us	Finance
King	Nancy J.	39	Montgomery	D	410-841-3686		nancy.king@senate.state.md.us	Budget and Taxation
Pugh	Catherine E.	40	Baltimore City	D	410/841-3656	410/841-3738	catherine.pugh@senate.state.md.us	Finance
Gladden	Lisa A.	41	Baltimore City	D	410/841-3697	410/841-3142	lisa.gladden@senate.state.md.us	Judicial Proceedings, Vice-Chair
Brochin	Jim	42	Baltimore County	D	410/841-3648	410/841-3643	jim.brochin@senate.state.md.us	Judicial Proceedings
Conway	Joan Carter	43	Baltimore City	D	410/841-3145	410/841-3135	joan.carter.conway@senate.state.md.us	Education, Health & Environmental Affairs, Chair
Nathan-Pulliam	Shirley	44	Baltimore City	D	410-841-3612	410-841-3100	shirley.nathan@senate.state.md.us	Education, Health & Environmental Affairs
McFadden	Nathaniel J.	45	Baltimore City	D	410/841-3165	410/841-3138	nathaniel.mcfadden@senate.state.md.us	Budget and Taxation
Ferguson	Bill	46	Baltimore City	D	410/841-3600	410/841-3161	bill.ferguson@senate.state.md.us	Budget and Taxation
Ramirez	Victor	47	Prince George's	D	301/858-3745	410/841-3387	victor.ramirez@senate.state.md.us	Judicial Proceedings

# MARYLAND DELEGATES

Last Name	First Name	District	County	Party	Phone	Fax	Email	Committee Assignment
Beitzel	Wendell R.	1A	Allegany & Garrett	R	410-841-3435	301-858-3040	wendell.beitzel@house.state.md.us	Appropriations Committee
Buckel	Jason	1B	Allegany	R	410-841-3404		jason.buckel@house.state.md.us	Ways and Means
McKay	Mike	1C	Allegany & Washington	R	410-841-3321		mike.mckay@house.state.md.us	Appropriations Committee
Parrott	Neil	2A	Washington	R	410-841-3636	301-858-3308	neil.parrott@house.state.md.us	Judiciary Committee
Serafini	Andrew	2A	Washington	R	410-841-3447	301-858-3818	andrew.serafini@house.state.md.us	Appropriations Committee
Wilson	Brett	2B	Washington	R	410-841-3125		brett.wilson@house.state.md.us	Judiciary Committee
Krimm	Carol L.	3A	Frederick	D	410-841-3472		carol.krimm@house.state.md.us	Appropriations Committee
Young	Karen	3A	Frederick	D	410-841-3436		karen.young@house.state.md.us	Health & Government Operations Committee
Folden	Bill	3B	Frederick	R	410-841-3240		William.Folden@house.state.md.us	Judiciary Committee
Vogt	David	4	Carroll & Frederick	R	410-841-3118		david.vogt@house.state.md.us	Appropriations Committee
Afzali	Kathy	4A	Carroll & Frederick	R	410-841-3288	301-858-3184	kathy.afzali@house.state.md.us	Ways and Means
Schulz	Kelly	4A	Carroll & Frederick	R	410/841-3080	301-858-3028	kelly.schulz@house.state.md.us	Economic Matters Committee
Krebs	Susan W.	5	Carroll	R	410-841-3200	410-841-3349	susan.krebs@house.state.md.us	Health & Government Operations Committee
Shoemaker	Haven	5	Carroll	R	410-841-3359		haven.shoemaker@house.state.md.us	Ways and Means
Ready	Justin	5A	Carroll	R	410-841-3070	301-858-3315	justin.ready@house.state.md.us	Health & Government Operations Committee
Grammer	Robin L.	6	Baltimore	R	410-841-3298		robin.grammer@house.state.md.us	Appropriations Committee
Long	Bob	6	Baltimore	R	410-841-3458		bob.long@house.state.md.us	Ways and Means
Metzgar	Ric	6	Baltimore	R	410-841-3332		Ric.Metzgar@house.state.md.us	Ways and Means
Impallaria	Rick	7	Baltimore & Harford	R	410/841-3289	410/841-3598	rick.impallaria@house.state.md.us	Economic Matters Committee
McDonough	Pat	7	Baltimore & Harford	R	410/841-3334	410/841-3598	pat.mcdonough@house.state.md.us	Health & Government Operations Committee
Szeliga	Kathy	7	Baltimore & Harford	R	410/841-3698	410/841-3023	kathy.szeliga@house.state.md.us	Environment and Transportation Committee
Bromwell	Eric	8	Baltimore	D	410/841-3766	410-841-3850	eric.bromwell@house.state.md.us	Health & Government Operations Committee
Cluster	John W. E.	8	Baltimore	R	410/841-3526	410/841-3098	john.cluster@house.state.md.us	Judiciary Committee
Miele	Christian	8	Baltimore	R	410-841-3526		christian.miele@house.state.md.us	Health & Government Operations Committee
Kittleman	Trent	9A	Carroll & Howard	R	410-841-3556		trent.kittleman@house.state.md.us	Judiciary Committee
Miller	Warren E.	9A	Carroll & Howard	R	410/841-3582	410/841-3571	warren.miller@house.state.md.us	Economic Matters Committee
Flanagan	Robert L.	9B	Howard	R	410-841-3077		Bob.Flanagan@house.state.md.us	Environment and Transportation Committee
Brooks	Benjamin	10	Baltimore	D	410-841-3352		benjamin.brooks@house.state.md.us	Economic Matters Committee
Jalisi	Jay	10	Baltimore	D	410-841-3358		jay.jalisi@house.state.md.us	Judiciary Committee
Jones	Adrienne A.	10	Baltimore	D	410/841-3391	410/841-3157	adrienne.jones@house.state.md.us	Appropriations Committee
Hettleman	Shelly	11	Baltimore	D	410-841-3833		shelly.hettleman@house.state.md.us	Appropriations Committee
Morhaim	Dan K.	11	Baltimore	D	410/841-3054	410/841-3385	dan.morhaim@house.state.md.us	Health & Government Operations Committee
Stein	Dana	11	Baltimore	D	410-841-3527	410/841-3373	dana.stein@house.state.md.us	Environment & Transportation, Vice-Chair
Ebersole	Eric	12	Baltimore & Howard	D	410-841-3328		eric.ebersole@house.state.md.us	Ways and Means
Hill	Terri L.	12	Baltimore & Howard	D	410-841-3378		terri.hill@house.state.md.us	Health & Government Operations Committee
Lam	Clarence K.	12	Baltimore & Howard	D	410-841-3205		clarence.lam@house.state.md.us	Environment and Transportation Committee
Atterbeary	Vanessa	13	Howard	D	410-841-3471		vanessa.atterbeary@house.state.md.us	Judiciary Committee
Pendergrass	Shane	13	Howard	D	410/841-3139	410/841-3409	shane.pendergrass@house.state.md.us	Health & Government Operations Committee, Vice-Chair
Turner	Frank S.	13	Howard	D	410/841-3246	410/841-3986	frank.turner@house.state.md.us	Ways and Means, Vice-Chair
Kaiser	Anne	14	Montgomery	D	410-841-3036	301-858-3060	anne.kaiser@house.state.md.us	Ways and Means
Luedtke	Eric	14	Montgomery	D	410-841-3110	301-858-3053	eric.luedtke@house.state.md.us	Ways and Means
Zucker	Craig	14	Montgomery	D	410-841-3380	301-858-3266	craig.zucker@house.state.md.us	Appropriations Committee
Dumais	Kathleen M.	15	Montgomery	D	410-841-3052	301-858-3219	kathleen.dumais@house.state.md.us	Judiciary Committee, Vice-Chair
Fraser-Hidalgo	David	15	Montgomery	D	410/841-3186	301-858-3112	david.fraser.hidalgo@house.state.md.us	Environment and Transportation Committee
Miller	Aruna	15	Montgomery	D	410-841-3090	301-858-3126	aruna.miller@house.state.md.us	Appropriations Committee
Frick	C. William	16	Montgomery	D	410-841-3454	301-858-3457	bill.frick@house.state.md.us	Economic Matters Committee
Kelly	Ariana	16	Montgomery	D	410-841-3642	301-858-3026	ariana.kelly@house.state.md.us	Health & Government Operations Committee
Korman	Marc	16	Montgomery	D	410-841-3649		marc.korman@house.state.md.us	Appropriations Committee
Barve	Kumar P.	17	Montgomery	D	410-841-3464	301-858-3850	kumar.barve@house.state.md.us	Environment & Transportation, Chair
Gilchrist	Jim	17	Montgomery	D	410-841-3744	301-858-3057	jim.gilchrist@house.state.md.us	Environment and Transportation Committee
Platt	Andrew	17	Montgomery	D	410-841-3037		andrew.platt@house.state.md.us	Ways and Means
Carr	Alfred C.	18	Montgomery	D	410-841-3638	301-858-3053	alfred.carr@house.state.md.us	Environment and Transportation Committee
Gutierrez	Ana Sol	18	Montgomery	D	410-841-3181	301-858-3232	ana.gutierrez@house.state.md.us	Appropriations Committee

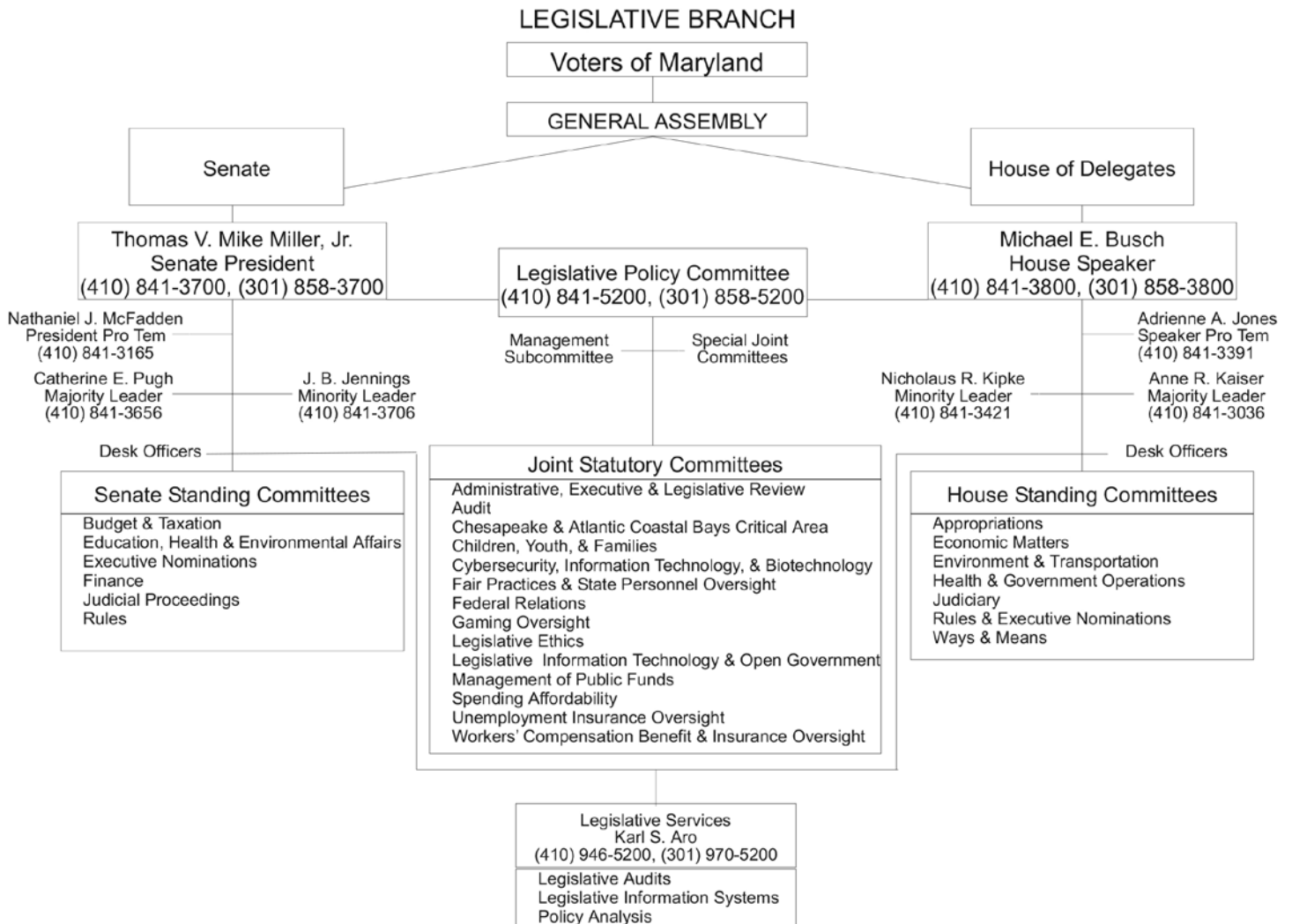
# MARYLAND DELEGATES

Last Name	First Name	District	County	Party	Phone	Fax	Email	Committee Assignment
Waldstreicher	Jeff	18	Montgomery	D	410-841-3130	301-858-3233	jeff.waldstreicher@house.state.md.us	Economic Matters Committee
Cullison	Bonnie	19	Montgomery	D	410-841-3883	301-858-3882	bonnie.cullison@house.state.md.us	Health & Government Operations Committee
Kramer	Benjamin K	19	Montgomery	D	410-841-3485	301-858-3875	benjamin.kramer@house.state.md.us	Economic Matters Committee
Morales	Marcie I.	19	Montgomery	D	410-841-3528		Marice.Morales@house.state.md.us	Judiciary Committee
Hixson	Sheila Ellis	20	Montgomery	D	410-841-3469		sheila.hixson@house.state.md.us	Ways and Means, Chair
Moon	David	20	Montgomery	D	410-841-3474		david.moon@house.state.md.us	Judiciary Committee
Smith	Will	20	Montgomery	D	410-841-3493		will.smith@house.state.md.us	Judiciary Committee
Barnes	Ben	21	Anne Arundel & Prince George's	D	410/841-3046	410/841-3346	ben.barnes@house.state.md.us	Appropriations Committee
Frush	Barbara	21	Anne Arundel & Prince George's	D	410/841-3114	410-841-3116	barbara.frush@house.state.md.us	Environment and Transportation Committee
Pena-Melnyk	Joseline	21	Anne Arundel & Prince George's	D	410/841-3502	410/841-3342	joseline.pena.melnyk@house.state.md.us	Health & Government Operations Committee
Gaines	Tawanna P.	22	Prince George's	D	410-841-3058	301-858-3119	tawanna.gaines@house.state.md.us	Appropriations Committee
Healey	Anne	22	Prince George's	D	410-841-3961	301-858-3223	anne.healey@house.state.md.us	Environment and Transportation Committee
Washington	Alonzo T.	22	Prince George's	D	410-841-3652	301-858-3699	alonzo.washington@house.state.md.us	Ways and Means
Valentino-Smith	Geraldine	23A	Prince George's	D	410-841-3101	301-858-3294	geraldine.valentino@house.state.md.us	Judiciary Committee
Holmes	Marvin E.	23B	Prince George's	D	410-841-3310		marvin.holmes@house.state.md.us	Environment and Transportation Committee
Vallario	Joseph F.	23B	Prince George's	D	410-841-3488	301-858-3495	joseph.vallario@house.state.md.us	Judiciary Committee, Chair
Barron	Erek	24	Prince George's	D	410-841-3692		Erek.Barron@house.state.md.us	Health & Government Operations Committee
Howard	Carolyn J.B.	24	Prince George's	D	410-841-3919		carolyn.howard@house.state.md.us	Ways and Means
Vaughn	Michael L.	24	Prince George's	D	410-841-3691	301-858-3055	michael.vaughn@house.state.md.us	Economic Matters Committee
Angel	Angela	25	Prince George's	D	410-841-3707		angela.angel@house.state.md.us	Health & Government Operations Committee
Barnes	Darryl	25	Prince George's	D	410-841-3557		darryl.barnes@house.state.md.us	Ways and Means
Davis	Dereck	25	Prince George's	D	410-841-3519	301-858-3558	dereck.davis@house.state.md.us	Economic Matters Committee, Chair
Knotts	Tony	26	Prince George's	D	410-841-3212		tony.knotts@house.state.md.us	Environment and Transportation Committee
Valderrama	Kris	26	Prince George's	D	410-841-3210	301-858-3525	kris.valderrama@house.state.md.us	Economic Matters Committee
Walker	Jay	26	Prince George's	D	410-841-3581	301-858-3078	jay.walker@house.state.md.us	Ways and Means
Proctor	James E.	27A	Charles & Prince George's	D	410-841-3083	301-858-3459	james.proctor@house.state.md.us	Appropriations, Vice-Chair
Jackson	Michael A.	27B	Calvert & Prince George's	D	410-841-3103		michael.jackson@house.state.md.us	Appropriations Committee
Fisher	Mark N.	27C	Calvert	R	410-841-3231	301-858-3335	mark.fisher@house.state.md.us	Economic Matters Committee
Jameson	Sally	28	Charles	D	410-841-3337	301-858-3277	sally.jameson@house.state.md.us	Economic Matters Committee, Vice-Chair
Patterson	Edith J.	28	Charles	D	410-841-3247		edith.patterson@house.state.md.us	Ways and Means
Wilson	C.T.	28	Charles	D	410/841-3325	410/841-3367	ct.wilson@house.state.md.us	Economic Matters Committee
Morgan	Matt	29A	St. Mary's	R	410-841-3170		Matthew.Morgan@house.state.md.us	Health & Government Operations Committee
Rey	Deborah C.	29B	St. Mary's	R	410-841-3227		Deborah.Rey@house.state.md.us	Judiciary Committee
O'Donnell	Anthony J.	29C	Calvert & St. Mary's	R	410/841-3314	410-841-3534	anthony.odonnell@house.state.md.us	Environment and Transportation Committee
Busch	Michael E.	30	Anne Arundel	D	410/841-3800	410/841-3880	michael.busch@house.state.md.us	Speaker of the House
McMillan	Herb	30	Anne Arundel	R	410/841-3211	410/841-3386	herb.mcmillan@house.state.md.us	Health & Government Operations Committee
Howard	Seth	30B	Anne Arundel	R	410-841-3439		seth.howard@house.state.md.us	Economic Matters Committee
Kipke	Nicholaus	31	Anne Arundel	R	410/841-3421	410/841-3553	nicholaus.kipke@house.state.md.us	Health & Government Operations Committee
Carey	Ned	31A	Anne Arundel	D	410-841-3047		ned.carey@house.state.md.us	Economic Matters Committee
Simonaire	Meagan C.	31B	Anne Arundel	R	410-841-3206		Meagan.Simonaire@house.state.md.us	Ways and Means
Beidle	Pamela	32	Anne Arundel	D	410/841-3370	410/841-3347	pamela.beidle@house.state.md.us	Environment and Transportation Committee
Chang	Mark S.	32	Anne Arundel	D	410-841-3511		mark.chang@house.state.md.us	Appropriations Committee
Sophocleus	Theodore	32	Anne Arundel	D	410/841-3372	410/841-3437	ted.sophocleus@house.state.md.us	Appropriations Committee
Saab	Sid	33	Anne Arundel	R	410-841-3551		sid.saab@house.state.md.us	Health & Government Operations Committee
McConkey	Tony	33A	Anne Arundel	R	410/841-3406	410/841-3209	tony.mcconkey@house.state.md.us	Appropriations Committee
Vitale	Cathy	33A	Anne Arundel	R	410/841-3510	410/841-3180	cathy.vitale@house.state.md.us	Environment and Transportation Committee
Glass	Glen	34A	Harford	R	410/841-3280	410-841-3754	glen.glass@house.state.md.us	Judiciary Committee
Lisanti	Mary Ann	34A	Harford	D	410-841-3331		MaryAnn.Lisanti@house.state.md.us	Economic Matters Committee
McComas	Susan K.	34B	Harford	R	410-841-3272	410-841-3202	susan.mccomas@house.state.md.us	Judiciary Committee
Hornberger	Kevin	35A	Cecil	R	410-841-3284		kevin.hornberger@house.state.md.us	Ways and Means

# MARYLAND DELEGATES

Last Name	First Name	District	County	Party	Phone	Fax	Email	Committee Assignment
Cassilly	Andrew	35B	Cecil & Harford	R	410-841-3444		andrew.cassilly@house.state.md.us	Environment and Transportation Committee
Reilly	Teresa	35B	Cecil & Harford	R	410-841-3278		teresa.reilly@house.state.md.us	Ways and Means
Arentz	Steven J.	36	Caroline, Cecil, Kent & Queen Anne's	R	410/841-3543	410/841-3098	steven.arentz@house.state.md.us	Economic Matters Committee
Ghrist	Jeff	36	Caroline, Cecil, Kent & Queen Anne's	R	410-841-3555		jeff.ghrist@house.state.md.us	Appropriations Committee
Jacobs	Jay A.	36	Caroline, Cecil, Kent & Queen Anne's	R	410/841-3449	410/841-3093	jay.jacobs@house.state.md.us	Environment and Transportation Committee
Sample-Hughes	Sheree	37A	Dorchester & Wicomico	D	410-841-3427		Sheree.Sample.Hughes@house.state.md.us	Health & Government Operations Committee
Adams	Christopher T.	37B	Caroline, Dorchester, Talbot & Wicomico	R	410-841-3343		christopher.adams@house.state.md.us	Economic Matters Committee
Mautz	Johnny	37B	Caroline, Dorchester, Talbot & Wicomico	R	410-841-3429		johnny.mautz@house.state.md.us	Economic Matters Committee
Otto	Charles James	38A	Somerset & Worcester	R	410-841-3433	410/841-3463	charles.otto@house.state.md.us	Environment and Transportation Committee
Anderton	Carl	38B	Wicomico	R	410-841-3431		carl.anderton@house.state.md.us	Environment and Transportation Committee
Carozza	Mary Beth	38C	Wicomico & Worcester	R	410-841-3433		marybeth.carozza@house.state.md.us	Appropriations Committee
Barkley	Charles	39	Montgomery	D	410-841-3001	301-858-3009	charles.barkley@house.state.md.us	Economic Matters Committee
Reznik	Kirill	39	Montgomery	D	410-841-3039	301-858-3126	kirill.reznik@house.state.md.us	Health & Government Operations Committee
Robinson	Shane	39	Montgomery	D	410-841-3021	301-858-3375	shane.robinson@house.state.md.us	Environment and Transportation Committee
Conaway	Frank M.	40	Baltimore City	D	410/841-3189	410-841-3079	frank.conaway@house.state.md.us	Judiciary Committee
Hayes	Antonio	40	Baltimore City	D	410-841-3545		antonio.hayes@house.state.md.us	Health & Government Operations Committee
Robinson	Barbara	40	Baltimore City	D	410/841-3520	410-841-3199	barbara.robinson@house.state.md.us	Appropriations Committee
Carter	Jill P.	41	Baltimore City	D	410/841-3268	410/841-3251	jill.carter@house.state.md.us	Judiciary Committee
Oaks	Nathaniel T.	41	Baltimore City	D	410/841-3283	410/841-3267	nathaniel.oaks@house.state.md.us	Health & Government Operations Committee
Rosenberg	Samuel I.	41	Baltimore City	D	410/841-3297	410/841-3179	samuel.rosenberg@house.state.md.us	Judiciary Committee
Aumann	Susan L.M.	42	Baltimore	R	410/841-3258	410/841-3163	susan.aumann@house.state.md.us	Economic Matters Committee
Lafferty	Stephen W.	42	Baltimore	D	410/841-3487	410/841-3501	stephen.lafferty@house.state.md.us	Environment and Transportation Committee
West	Chris	42B	Baltimore County	R	410-841-3793		chris.west@house.state.md.us	Health & Government Operations Committee
Anderson	Curt	43	Baltimore City	D	410/841-3291	410/841-3024	curt.anderson@house.state.md.us	Judiciary Committee
McIntosh	Maggie	43	Baltimore City	D	410/841-3990	410/841-3509	maggie.mcintosh@house.state.md.us	Appropriations, Chair
Washington	Mary	43	Baltimore City	D	410/841-3476	410/841-3295	mary.washington@house.state.md.us	Ways and Means
Haynes	Keith E.	44	Baltimore & Baltimore City	D	410/841-3801	410/841-3530	keith.haynes@house.state.md.us	Appropriations Committee
Sydnor	Charles E.	44B	Baltimore County	D	410-841-3802		charles.sydnor@house.state.md.us	Judiciary Committee
Young	Pat	44B	Baltimore County	D	410-841-3544		pat.young@house.state.md.us	Appropriations Committee
Branch	Talmadge	45	Baltimore City	D	410/841-3398	410/841-3550	talmadge.branch@house.state.md.us	Economic Matters Committee
Glenn	Cheryl	45	Baltimore City	D	410/841-3257	410/841-3019	cheryl.glenn@house.state.md.us	Economic Matters Committee
McCray	Cory V.	45	Baltimore City	D	410-841-3486		cory.mccray@house.state.md.us	Environment and Transportation Committee
Clippinger	Luke	46	Baltimore City	D	410/841-3303	410/841-3537	luke.clippinger@house.state.md.us	Economic Matters Committee
Hammen	Peter A.	46	Baltimore City	D	410/841-3772	410/841-3409	peter.hammen@house.state.md.us	Health & Government Operations Committee, Chair
Lierman	Brooke	46	Baltimore City	D	410-841-3319		brooke.lierman@house.state.md.us	Appropriations Committee
Fennell	Diana	47A	Prince George's	D	410-841-3478		diana.fennell@house.state.md.us	Ways and Means
Tarlau	Jimmy	47A	Prince George's	D	410-841-3326		jimmy.tarlau@house.state.md.us	Ways and Means
Campos	Will	47B	Prince George's	D	410-841-3340		will.campos@house.state.md.us	Judiciary Committee

# Organizational Structure of Maryland's Legislative Branch



**VISIT:**

**[www.mgaleg.maryland.gov](http://www.mgaleg.maryland.gov)**

To find legislation, status of legislation, committee information, and committee hearing schedule and agendas.

# MedChi's Legislative Council: Monitoring State Legislation That Impacts Physicians, Practices & Patients

The function of the Council on Legislation is to study and make recommendations regarding policy on state legislation and regulations; to serve as a reference council through which legislative issues are channeled prior to decisions concerning MedChi legislative and regulatory policy; and to recommend changes to the House of Delegates in MedChi's legislative policy when necessary to achieve MedChi's goals.

The following are physician and medical student members of MedChi's Legislative Council. If you have questions about any of the current legislative initiatives or the Council's process, contact a physician member of the Council and/or MedChi staff.

Co-Chair: Gary W. Pushkin, MD  
Co-Chair: Stephen Rockower, MD

## Subcommittees:

### Boards & Commissions Committee

Vice Chair: Clement Banda, MD

### Health Insurance Committee

Vice Chair: Matthew Burke, MD

### Public Health Committee

Vice Chair: Sarah Merritt, MD

### Legislative Council Members:

Nick Abt - Medical Student  
Harbhajan Ajrawat, MD

Thomas Allen, MD  
William Anderson, MD  
Robert Atlas, MD  
Brian H. Avin, MD  
Joyce Bahraini  
Clement Banda, MD  
Albert Blumberg, MD  
George Bone, MD  
Brooke Buckley, MD  
Paul Celano, MD  
James Chappell, MD  
James Chesley, MD  
Anthony Chiaramonte, MD  
Harvey Cohen, MD  
Beverly Collins, MD  
Doris Cope, MD  
Peter Curran, MD  
Tyler Cymet, D.O.  
Nader Dakak, MD  
Steven Daviss, MD  
Ronald Delanois, MD  
Michael Dodd, MD  
Mark Edney, MD  
Willarda Edwards, MD  
Seth Flagg, MD  
Douglas Forman, MD  
Vinu Ganti, MD  
Nicholas Georges, MD  
David Glasser, MD  
Kapil Gopal, MD  
John Gordon, MD  
Larry Green, MD  
Andrew Greenberg, MD  
Scott Hagaman, MD  
David Hexter, MD  
Marcel Horowitz, MD  
Kery Hummel, MD  
Thad Hunter  
Joseph Hutter, MD  
Eric Jeffries, MD  
Allan Jensen, MD  
Williams Jones, MD  
Neil Julie, MD  
Jeffrey Kaplan, MD  
Kathleen Keeffe, MD  
Joneigh Khaldun, MD  
Bilal Khan, MD  
Kopal Kulkarni, MD  
Colleen Leavitt, MD  
Steven Lenowitz, MD  
Robert Levine, D.O.  
Ben Lowentritt, MD

Loralie Ma, MD  
David McCarus, MD  
Sarah Merritt, MD  
Shawntea Moheiser, MD  
Jessica Moore -  
Medical Student  
Michael Murphy, MD  
John Newby, MD  
Mary Newman, MD  
Yngvild Olsen, MD  
Bertan Ozgun, MD  
Orlee Panitch, MD  
Kunj Patel, MD  
Ambadas Pathak, MD  
Karlo Perica, MD  
Marcel Posner, MD  
Shannon Pryor, MD  
Gary Pushkin, MD  
Anuradha Reddy, MD  
Neal Reynolds, MD  
Carol Ritter, MD  
Stephen Rockower, MD  
Richard Rosenbaum, MD  
Farzaneh Sabi, MD

David Safferman, MD  
Adam Scherr, MD  
Richard Scholz, MD  
Sudhir Sekhsaria, MD  
Martin Shargel, MD  
Saba Sheikh, MD  
Thayer Simmons, MD  
Megan Srinivas, MD  
Ron Sroka, MD  
Robert Stroud, MD  
William Teeter, MD  
Kem Tolliver  
Paul Turer, MD  
Jayant Uberoi, MD  
Elizabeth Wiley, MD  
James Williams, MD  
James Winthrop, MD  
Bruce Wollman, MD  
Russell Wright, MD  
James York, MD  
Jos Zebley, MD

From the early days  
of the vaccine clinics,  
to the advent of nuclear medicine,  
**MedChi**  
has been the constant thread,  
connecting then and now.

Come and explore MedChi's illustrious history, see our collection of paintings dating to the early 1800's, or click on our archives blog, [medchiarchives.blogspot.com](http://medchiarchives.blogspot.com).

The History of Maryland Medicine Committee is a project of the Center for a Healthy Maryland, the affiliated 501(c)(3) foundation of MedChi.

For information, please email [events@medchi.org](mailto:events@medchi.org)

Center for a  
**Healthy Maryland**

## MedChi's Blue Ribbon Commission: Examining the Future Role of the Physician

*In September of 2013, MedChi's House of Delegates authorized the formation of the Blue Ribbon Commission: The Physician Role in Future Healthcare Systems. Its purpose is to help physicians prepare for the future state of health care. The Commission's chief responsibility is to develop strategies that allow physicians to continue providing optimal care to their patients, while also preserving the physician's role in health care. The Commission will submit a report on its findings in April 2015 to the House of Delegates. You can follow their thinking and research at [www.medchi.org/blueribboncommission](http://www.medchi.org/blueribboncommission).*

*In the last issue of Maryland Medicine, we included biographies of Blue Ribbon Commission members Dr. Chuck Albrecht, Dr. Zaneb Beams, Dr. Dobbins Chow, Dr. Tyler Cymet, Taylor DesRosiers, Dr. Ramsay Farah, Dr. Alan Harvey, Dr. Mark Jameson, Dr. Jeff Kaplan, Dr. Joneigh Khaldun, Dr. Dan Morhaim, Dr. Michele Manahan, Dr. Thomas Smyth, and Dr. Eric Wargotz. We regret that one valued member's biography was omitted and one was not current. We are pleased to include that information here.*

### Eric Wargotz, MD



**Dr. Wargotz** practices Pathology and Laboratory Medicine in Prince George's County and is a founder and managing part of Elliott & Wargotz, Pathologists, LLC. is a Clinical Professor of Pathology at the George Washington University (GWU) College of Medicine and is a recognized expert in Breast and Gynecological Pathology. He served as Medical Director and Chief of Pathology at Doctors Community Hospital for more than twenty years and has held additional leadership positions in and outside of medicine, including the following: president of the Queen Anne's County Medical Society; member of the Maryland Board of Medical Quality Assurance; MedChi Board of Trustees; and president of the Queen Anne's County Board of Commissioners (elected in 2006). Dr. Wargotz currently is active in a variety of roles, which among them are Delegate to the MedChi House of Delegates; Delegate to the College of American Pathologists (CAP) House of Delegates; ACCME ARC Committee; George Washington University College of Medicine Admissions Committee; and CAP State and Federal Affairs Committee. Dr. Wargotz was recently elected as Judge of the Orphans' Court in Queen Anne's County.

### H. Russell Wright, Jr., MD



**Dr. Wright** served as MedChi's 166th president, and is an otolaryngologist and allergy specialist from Towson, Maryland. Dr. Wright holds bachelor degrees from the Johns Hopkins University and the University of Maryland, Baltimore County. received his medical degree in 1979 from the

University of Maryland School of Medicine and completed his residency and a fellowship in Otolaryngology at the Johns Hopkins Hospital in 1983. Dr. Wright served as Medical Staff President for St. Joseph's Medical Center for two years and also served on the medical staff at Greater Baltimore Medical Center. Dr. Wright has been an active member of the National Guard for more than twenty-five years and has attained the rank of Colonel. He joined the Guard following his service in the Army in Vietnam, where he served as a Company Commander and Staff Officer for the First Cavalry Division. Dr. Wright has also been an active member of the scouting community for many years, serving as a scoutmaster for both the Boy Scouts of America and the Girl Scouts of America. He served at the district and national levels on Health and Safety Councils and on fundraising steering committees. He has served as a physician at the Boy Scout Jamboree in 1997, 2005, 2010, and 2013. He was honored in 2013 with the BSA Baltimore Area Council's City Lights Community Service Award. Dr. Wright has previously served as president of the Baltimore County Medical Association, Speaker of the House of MedChi, and as Baltimore County Trustee on the MedChi Board of Trustees.

THE JOHNS HOPKINS  $R_x$ :

**BUSINESS CAN BE  
THE BEST MEDICINE.**

New Business of Health Care  
Certificate now enrolling for  
Spring 2015.

[carey.jhu.edu](http://carey.jhu.edu)

 **JOHNS HOPKINS**  
CAREY BUSINESS SCHOOL

# Physician Volunteerism: Making a Difference One Patient at a Time

## PHYSICIAN VOLUNTEERISM

*With this issue of Maryland Medicine, we begin a regular department in which we highlight the efforts—extraordinary and routine, foreign and domestic, sponsored and impromptu—of our physician members in voluntary service to others. Often at their own expense, or sponsored by friends, family, and physician colleagues, our member physicians have consistently and sometimes at peril of their lives, donated their time, talents, and compassion to underserved and unserved populations, both domestic and abroad. Very often, these same physicians, along with nurses, administrators, and other professionals, will be counted as the only medical care serving large sections of indigent, needy populations.*

*These volunteer physicians often receive little recognition or credit save the self-knowledge that each has done a great service. Every once in a while, in an Ebola scare, or an earthquake of devastating magnitude, our doctors will get public credit for their work. For the most part they work in relative anonymity, saving sight and treating tuberculosis, malaria, parasites, and deformities.*

*The editors of Maryland Medicine put out a call to our readers for short articles describing their volunteer work. Each volunteer was asked to write a short piece describing his or her experiences, feelings and the meaning to each of that volunteer work. We thought that our colleagues and readers would be interested in and perhaps be inspired to do something similar. We begin this feature with the stories in this issue and will print additional stories in future issues of Maryland Medicine.*

*We feel that others outside of our profession should know of this work. We are often known for our office or hospital work or for the articles in the newspaper about battleground issues affecting the profession as a whole. We will make every attempt to disseminate the issue containing news of our volunteer efforts so that the public at large and their public officials can appreciate this dimension of our profession...the selfless and significant work that many of*

*us donate so that others without means or resources may enjoy better personal and public health. Please don't be modest. Send us your volunteer service experience so that we may properly bring credit to a selfless job well done (For more information or to submit personal stories about your volunteer experiences, contact [scarey@montgomerymedicine.org](mailto:scarey@montgomerymedicine.org)).*

**volunteer** (vāl' ən-tir') n.

1. a person who voluntarily offers himself or herself for a service or undertaking. 2. a person who performs a service willingly and without pay.

### Herbert Berkowitz, MD Community Center Clinic, Inc.



Dr. Herbert Berkowitz has been a volunteer pediatrician for the past four years at Community Center Clinic, Inc. (CCI), a nonprofit, community-based health care agency that serves the uninsured and under-insured in Montgomery and Prince George's counties. Dr. Berkowitz is an integral part of the team at the Gaithersburg clinic. Patients and families consistently praise him as caring, thorough, and dependable. Dr. Berkowitz's face lights up when he enters the exam room to greet his patients. He truly enjoys his work as a pediatrician at CCI. In June 2014, Dr. Berkowitz was chosen as the volunteer of the quarter, which is a testament to his great sense of teamwork, dedication to his patients, and hard-working demeanor.

*Community Center Clinic, Inc., 8630 Fenton Street, Suite 1204, Silver Spring, MD 20910; 301.340.7525 (For more information about volunteering, contact [Communications@cciweb.org](mailto:Communications@cciweb.org)).*

### Lawrence J. Green, MD Congressional Award, Board of Directors



Dr. Lawrence J. Green has served on Board of Directors for Congressional Award program since 2009. The board is the United States Congress's only charitable organization

and awards the Congressional Award to American youth, ages 14 to 24. The aim of the Congressional Award is to challenge young Americans to become involved in endeavors that will benefit not only themselves, but also American society. As a board member, Dr. Green meets with Members of Congress, Senators, and their staff to encourage them to participate in the program.

Dr. Green also served on the Board of Trustees for the National Psoriasis Foundation (NPF) from 2005 to 2014. The mission of the NPF, the world's largest patient network for people suffering with psoriasis, is to educate the public about psoriasis; advocate on local, state, and national levels for all the issues people with psoriasis face; and fund research to find a cure. Dr. Green, who himself has psoriasis, first became involved and volunteered with the NPF in 1989, leading a local Orange County, California, patient support network. When elected to the NPF Board of Trustees in 2005, Dr. Green was named chair of its research committee, where he oversaw the selection and distribution of its research dollars. During his tenure, the NPF research budget grew from \$25,000 in grants per year to more



than \$1,000,000 in grants per year. Dr. Green also served for nine years on the NPF advocacy committee. As a member of the advocacy committee, Dr. Green advocated on Capitol Hill for better care and access for individuals suffering with psoriasis; met with CMS to discuss limiting patient's phototherapy copayments; communicated with insurers who have eliminated helpful medications from their formularies; and spoke at FDA advisory board hearings regarding new medications for psoriasis. In 2010, Dr. Green received President Obama's "Volunteer Service Award" for his efforts relating to patient advocacy issues.

*The Congressional Award program, [www.congressionalaward.org](http://www.congressionalaward.org); National Psoriasis Foundation, [www.psoriasis.org](http://www.psoriasis.org)*

{ "If each of us does something to improve the community in which we live, together we can build a more just and healthy world around us." —Laurie Welch, MD }

## Vani Rao, MD Muslim Community Center Medical Clinic



Dr. Rao is a volunteer psychiatrist at the Muslim Community Center (MCC) Medical Clinic, which provides compassionate, high-quality medical care to any adult without health care coverage. "I came to this country about seventeen years ago to start life all over again in the land of opportunity," Dr. Rao says. "The love, support and encouragement I received from several people, both at work and outside of work, have been life changing." After completing her residency in psychiatry at Johns Hopkins University School of Medicine (JHUSOM), Dr. Rao joined the faculty there. About four years ago, she felt a sense of indebtedness to society that supported her. "I had a strong urge to give back to people, many who are less fortunate, all the support and encouragement I had received when I arrived in this country. I found MCC to be an ideal place to do this."

*MCC Medical Clinic, 15200 New Hampshire Avenue, Silver Spring, MD 20905; 301.384.2166 (For more information about volunteering, visit [www.mccclinic.org](http://www.mccclinic.org)).*

**Are you receiving all the revenue you are entitled to?**

**MedChi can help.**

Contact us today.  
1-888-507-6024  
[info@medchiservices.org](mailto:info@medchiservices.org)  
<http://www.medchiservices.org>

## Mobile Medical Care, Inc. (MobileMed)

Low-income earners face the greatest barriers to health-care access. Drs. George Cohen and Herman Meyersburg founded Mobile Medical Care, Inc. (MobileMed) more than forty-five years ago to address the unmet healthcare needs of low-income Montgomery County families. The organization's values include healthcare access for all, quality services provided with compassion, respect and cultural sensitivity, and organizational excellence and integrity. MobileMed's commitment to accessibility is achieved through multiple fixed site and mobile van locations throughout Montgomery County, extensive outreach in collaboration with diverse faith-based and ethnic organizations, and a policy of never turning anyone away who cannot pay. In 2014, MobileMed delivered 14,000 medical visits, providing primary and preventive healthcare to 5,000 diverse people from one hundred countries who speak twenty-five languages. Volunteer physicians deliver healthcare to nearly 40% of all MobileMed patients, providing primary care, internal medicine subspecialties, gynecology, neurology, and psychiatry.

*Mobile Medical Care, Inc., 9309 Old Georgetown Road, Bethesda, MD 20814; 301.493.2400, ext. 836 (For more information about volunteering, contact [volunteer@mobilemedicalcare.org](mailto:volunteer@mobilemedicalcare.org)).*

### Laurie Welch, MD



Dr. Laurie Welch has been a volunteer with MobileMed for almost ten years, and now serves as the volunteer medical director. Seeing patients on the mobile van on Fridays in Takoma Park is often the highlight of her week. Patients are from all over the world—Ethiopia, Cameroon, Guatemala, Haiti, and nearby Silver Spring. As a diagnostician, Dr. Welch is fascinated by the variety

of illnesses that she encounters. As a healer, she is drawn to the patients' stories and troubles, and committed to use all the resources of MobileMed and the county to help them address obstacles to health and well-being. "If each of us does something to improve the community in which we live, as these primary care providers do, together we can build a more just and healthy world around us. MobileMed is an important part of that construction, and I'm honored to help."

### Sarah R. Linde, MD



Dr. Linde has volunteered with MobileMed for more than a decade. As a family physician and Commissioned Corps Officer in the U.S. Public Health Service, Dr. Linde is passionate about helping underserved populations. Volunteering with Mobile Medical Care has afforded her the opportunity to work with similarly minded volunteers and staff committed to making a difference.

Over the years, Dr. Linde has worked in the Women's Clinic, on the mobile van, and at Rollins Avenue. "Hands down, the best

part of working with MobileMed has been the gratitude that each and every patient has expressed. Addressing the various physical, psychological, and sometimes social issues that affect one's health and well-being, especially in individuals who come from all over the world, who are often separated from other family members, who may not speak English, and who show the true resilience of the human spirit, has been a humbling experience in which I am honored to be a part."

### David Wolfe, MD



Dr. Wolfe has been volunteering at MobileMed as a consulting rheumatologist for more than five years. Before entering fellowship and private practice, he spent three years working as an internist and pediatrician in the Navajo Area Indian Health Service. Dr. Wolfe started at MobileMed because he missed serving indigent populations and yearned for a more pure practice of medicine in

which his time with patients did not involve accepting money. "I missed the cross-cultural dimension of medicine," Dr. Wolfe says. "My time at MobileMed has become the professional highlight of my month. In the future, I hope to find the time to expand my involvement at MobileMed."

### Carlos E. Picone, MD



Dr. Picone is a pulmonologist who has been volunteering at MobileMed since 2007. Dr. Picone believes that most physicians want to provide access to good medical care and appropriate health advice free of the complications imposed by insurances and payment systems. Mobile Medical Care has provided Dr. Picone and his colleagues the opportunity to do this in a friendly

environment of partnership between patients, nurses, assistants, and physicians while providing a safety net to all members of society, where nobody is abandoned and left behind to their own peril. "Volunteerism is one of the main reasons most of us attend medical school and enthusiastically embraced long years of training. Mobile Medical Care allows us to do that in our backyard, promoting a healthy community in the process, fulfilling our need to help others and echoing those important words, 'It takes a Village...'"

# MedChi PQRSwizard®

<https://medchi.pqrswizard.com>

## The PQRSwizard Makes PQRS Reporting Quick & Easy:

- ✓ Start Reporting Your PQRS Measures NOW to avoid a 1.5% penalty and become eligible for a 0.5% incentive
- ✓ No Claims or Coding – requires as few as 20 patient records
- ✓ Saves Time – complete and submit your entire PQRS report online in just a few hours
- ✓ Maximize Your Incentive – automatically validates your practice data & notifies you when the report is ready to submit



**MedChi**  
The Maryland State Medical Society

POWERED BY  
**CECITYREGISTRY**  
A CMS Qualified Registry for PQRS

## Take a closer look at the MedChi Career Center...

Create your job seeker or employer profile today at [CAREERS.MEDCHI.ORG!](http://CAREERS.MEDCHI.ORG)



**MedChi**  
The Maryland State Medical Society

### All services are FREE to Job Seekers

- Build your own in-depth profile to market your skills & talent
- Upload your resume and update it as often as you want (confidentially, if you prefer)
- Set up a personal Job Agent and be alerted when new jobs are posted
- Review career-search tips and advice from recruiting experts

### MedChi Employer Features

- Find the best products and rates to meet your staffing needs
- Search for qualified candidates based on job specific qualifications
- Create an online Resume Agent to email qualified candidates right to your inbox daily
- Use Employer Resources to get help with government compliance, job posting tips and other resources



# From MedChi to Legislation

## WORD ROUNDS

**Barton J. Gershen, MD**  
Editor Emeritus

The Greek word for “work” is *ergon*, from which physicists derived the term **erg**, meaning a unit of mechanical work equal to  $10^{-7}$  joules. (The joule is named for **James Joule**, a British physicist.) Other applications of the Greek *ergon* may be seen in the word **energy** and **ergonomics**. In 1894, Rayleigh and Ramsay, at University College London, discovered the third most common gas in earth’s atmosphere, twenty-four times more abundant than  $\text{CO}_2$ . They ascertained that the gas was inert and would not combine with any other element. Therefore, they named it **argon**, from Greek *a*, “not,” and *ergon*, “work.” It was a “non-working” element, and it joined the other six “noble” gases—all of royal vintage because none of them do any work.

The word for “hand” in Greek is *cheir*. We find that root in such words as **chiropractor**, from *cheir* plus *praktikos*, “practice,” that is “treatment done by hand”—manipulations of the spine—a form of alternative medicine. In former days, the **chiropodist** (from Greek *cheir*, “hand,” and *pous*, “foot”) treated hands and feet for various illnesses, but today he is better known as a **podiatrist** (*pous* plus *iatros*, “physician,” as in iatrogenic disease), since he exclusively cares for feet.

*Pous* can also be recognized in **tripod** (Greek *tri*, “three,” plus *pous*, “feet”), **gastropod** (snails and slugs, misnamed because the original taxonomists believed these creatures crawled on their stomach), **octopus** (Greek *octo*, “eight,” for the eight feet of those fascinating animals), and **podium**, “raised platform,” since it is supported on feet.

The Greek *pous*, “foot” became *pes* in Latin. The genitive form of *pes* is *pedis*, “of feet,” and so we encounter **pedestrians** who use their feet; **impediments**, which entangle their feet; **expedite**, which quickly extricates those trapped feet (from Latin *ex*, “out of,” plus *ped*, “feet”); bicycle

**pedals**, devices used by feet; and **pedometers**, which measure how far your feet have walked.

However, *pes/pedis* is not the root form in **orthopedics**. Here, the Greek origin is *pais*, “child,” the genitive of which is *paidos*. Together with *ortho*, “straight,” the resulting term becomes “straightening the child,” a reference to surgical procedures for repairing scoliosis. **Pediatrics** derives from *pais/paedis* plus *iatros*, “physician,” as they are “doctors of children.” The British write **orthopaedics** and **paediatrics**, which makes it easier to understand the connection to their Greek roots.

If one places *cheir*, “hand,” before *ergon*, “work,” one forms the Greek word *cheirurgeon*, “one working with his hands.” In ancient days, this word was applied to those who performed operations—obviously using their hands. Eventually, *cheirurgeons* evolved into **surgeons**.

In January 1799, 101 Maryland physicians met in Annapolis. They were concerned about the disparity in the quality of medicine, and the threat to patients caused by charlatans. The physician conclave voted to act as an accrediting body, to ensure competent standards of care and to safeguard the public. The Maryland General Assembly approved the measure, and the state organization was formed. Since there were two general kinds of physician existing at that time, the physicians named themselves The Medical and Surgical Faculty, or in a more classical form, *The Medical and Chirurgical Faculty*, a shortened form of which is **MedChi**.

From the Greek for “child,” a word was formed that should have denoted affection for children, but has instead been hijacked to describe a vile and revolting act, **pedophilia**. The word stems from *paidos* plus *philos*, “loving.” On the other hand, *philos* has been used to describe some of life’s transcendent activities such as **philanthropy**—from *philos* plus *anthropos*, “mankind”—a “lover of mankind,” one

who has an altruistic concern for human well-being. **Philharmonic**, from Greek *philos*, plus *harmonikos*, “musical,” which means a “lover of music. **Philosophy**, from *philos* plus Greek *Sophia*, “wisdom,” a “lover of wisdom.” *Sophia* was a Gnostic goddess of wisdom. In Roman Catholic and Orthodox churches *Hagia Sophia* means “holy wisdom.” There is a famous church in Istanbul, Turkey, named the *Hagia Sophia*. *Hagia* stems from Greek *hagios*, “sacred.” **Hagiography**, a study of the lives of saints, stems from *hagia*, “sacred or holy,” plus *graphos*, “writing.” *Graphos* can be found in such words as **telegraph**, **phonograph**, **photograph**, **autograph**, **biography**, **geography**. (There was a famous movie star named Sophie Tucker, who was often called “last of the red hot mamas.” I don’t believe her talent was wisdom.)

The name **Phillip** is derived from Greek *philos* plus *hippos*, “horse,” “one who loves horses.”

(*Hippos* can be clearly seen in **hippopotamus**, the root *potamios* meaning “river.” The Greek historian Herodotus believed these animals were large river horses.) The **Philodendron** is a flowering plant that climbs trees, thus *philos*, “loving,” plus *Dendron*, “tree.” To **philander** is for a man to flirt and/or have sexual relations with many women. It derives from *philos* plus *andro*, “man.” Ancient Greeks originally coined the term as *philandros*, meaning “a woman who loves a man.” Unfortunately, 17<sup>th</sup> century authors misinterpreted the word, believing it to mean “a man who loves,” or “one who womanizes.” Such was the protagonist in a play “The Way of the World,” by the British playwright William Congreve. He was named Philander, and shouldered all the above requirements. The meaning of philander was forever changed.

Wolfgang Mozart’s original middle name was **Theophilus**—“lover of God”—from Greek *theos*, “god,” plus *philos*, “love.” Mozart apparently didn’t like the Greek version, so he changed his name to

# CLASSIFIEDS

## EMPLOYMENT

### FREE BEAUTIFUL BEACH CONDO FOR FULL-TIME, PART-TIME OR SUMMER EMPLOYMENT AT OUR MODERN URGENT CARE CENTER.

Friendly, yet exciting fast-paced atmosphere. Our urgent care center is well-staffed and equipped with x-rays, labs, EKG, pharmacy, and always staffed with physicians, nurses, medical assistants, and radiology technicians. We offer a beautiful condo, tennis, pool, and salary with paid malpractice, flexible schedule, and more. NO HMO and NO ON CALL. Enjoy some fun and sun at the beach. Watch the sunsets and enjoy the crabs on the boardwalk. Contact: Dr. Victor Gong, 75th St. Medical, 410.524.0075, [vgongmd@gmail.com](mailto:vgongmd@gmail.com).

### JOHNS HOPKINS-TRAINED DIAGNOSTIC RADIOLOGIST NEEDS PART-TIME EMPLOYMENT OR CONTRACT.

Long-term experience in plain film reading & CT scanning. No need for employee benefits except malpractice coverage. Call 410.823.9197 & or [rsindler@outlook.com](mailto:rsindler@outlook.com)

**INTERNIST.** Outstanding opportunity for a BC/BE internist or internist with pulmonary interest to join and acquire an established patient base in the largest primary care/ multispecialty medical practice in Montgomery County, MD. For confidential consideration, please email cover letter and CV to [palori@wcnnet.com](mailto:palori@wcnnet.com).

**Amadeus**, the Latin for “lover of God”—from *amo*, “I love,” plus *deus*, “God.” (I wonder if Tom Hulce would have played “Theophilus” differently?) Incidentally, the vertical depression in our upper lip is called a **philtrum** (bet you didn’t know that), from Greek *philtron*, “love potion.” (I wonder if Philander knew that.)

A logophile is a “lover of words,” which obviously describes this author. It derives from Greek *logos*, “word,” plus *philos*. The Greeks, who were quite inventive and talked a lot, had a second term for “word or speech.” It was *lexis*, which has given us words such as **lexicography**, “the writing of dictionaries”; **lexicon**, “a word book, or the vocabulary of a language”; and **dyslexia**, “inability to integrate auditory and visual information.” The Greek root *lex* derives from the verb *legein*, “to speak.” Several English words stem from *legein*, including **legal**, **legitimate**, and **legislate**.

## LEASE/SUBLEASE/SALE

**MEDICAL PRACTICE & OFFICE FOR SALE.** Primary care practice est. 1979 and office for sale. 2-lot property & parking with Mont. Co. special exception, & rental income. 301.351.5771.

### N. BETHESDA/ROCKVILLE:

Brand New Medical Office Space available 9/1/14. Near 270/495/Montrose Rd. Approx 900 sqft available. Free Parking and Internet. Perfect for satellite office or for solo practitioner. MRI/CT/Xray in building. Contact: David M Katz, MD, 301.312.0671 or [dmk.bethesda@gmail.com](mailto:dmk.bethesda@gmail.com).

**SEEKING TO BUY.** Physician led company is seeking to buy the medical practices of retiring physicians or physicians making other career choices. Company will consider city and suburban locations. The review process and decision will be confidential and quick. Please send inquiries to [info@landiss-group.com](mailto:info@landiss-group.com), or call 240.416.8080.

**SILVER SPRING, DOCTOR'S MEDICAL PARK.** Georgia Ave at Medical Park Dr. Close to Holy Cross Hospital, ½ mile north of #495. 3 building medical campus totaling 95,000 sq.ft with over 100 practitioners and Clinical Radiology's HQ. 2 suites from 1100 sq.ft. avail. Call Steve Berlin at Berlin Real Estate, 301.983.2344 or [steve@berlinre.com](mailto:steve@berlinre.com).

In this Word Rounds, we have traveled a meandering labyrinth of words from “MedChi” to “legislate.” *Maryland Medicine* is devoting the current issue to the passage of state laws that will favorably impact medical care. Let’s hope that MedChi is successful in securing legislation that will augment our ability to care for patients, and reinforce the security of those who provide it.

*Barton J. Gershen, MD, Editor Emeritus of Maryland Medicine, retired from medical practice in December 2003. He specialized in cardiology and internal medicine in Rockville, Maryland.*



## FILL THE BOX FILL THE NEED

The Dispensary of Hope is a national not-for-profit that helps uninsured patients get the medications they need. After we receive unused sample medications donated from practices like yours, we coordinate their distribution to charitable clinics and pharmacies across the country.

**More Hope.  
Less Paperwork.  
No Waste.**

DISPENSARY OF

# HOPE

Join the movement.

Call **888.428.HOPE**

[www.dispensaryofhope.org/give-meds](http://www.dispensaryofhope.org/give-meds)

© 2013 Dispensary of Hope. All rights reserved.  
Hope Box is a trademark of Dispensary of Hope.

## “Laws are Like Sausages. Better Not to See Them Being Made”

Who said it first? Otto von Bismarck? John Godfrey Saxe? Claudius O. Johnson?

Ever wondered where a quote first originated? Blogger Garson O’Toole explores the origins of quotations and records his investigatory work on his website: Quote Investigator: Exploring the Origins of Quotations. The following is adapted from an article that was posted on July 8, 2010, regarding the attribution of the quotation: “Laws are like sausages. Better not to see them being made.”

Quotation experts Fred Shapiro and Ralph Keyes have identified the most likely originator of the aphorism. Before presenting that evidence we will give the details of a citation in an American history textbook from the 1930s. This post ends with information about a bizarre duel involving sausages that was reported in the 1860s.

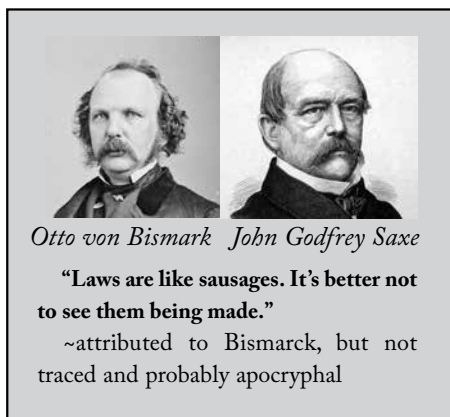
The earliest citation that attributes a version of the quotation to Otto von Bismarck is in a 1933 textbook titled *Government in the United States*, by Claudius O. Johnson. The chapter, “Congress: Procedure and Powers” begins with the following:

I think it was Bismarck who said that the man who wishes to keep his respect for sausages and laws should not see how either is made. With reference to the laws, a knowledge of how they are made may increase our respect for them and their makers; and if it does not, we are at least able to express our dissatisfaction in an intelligent manner.<sup>1</sup>

The textbook author expresses uncertainty about the attribution, but later writers express fewer reservations. Here is an example in a Utah newspaper in 1958:<sup>2</sup>

There is an old saying attributed to Prince Bismarck that “to retain respect for sausages and laws, one must not watch them in the making.”

The *Oxford Dictionary of Quotations* has the epigram listed in the Misquotations section because of its flawed association with Bismarck:<sup>3</sup>



In March of 2009 Fred Shapiro discussed the quote in a posting at the Freakonomics blog of the *New York Times*. He updated the findings reported in the *Yale Book of Quotations*:<sup>4</sup>

This is usually attributed to Bismarck, but the Iron Chancellor was not associated with that quip until the 1930’s. The Daily Cleveland Herald, March 29, 1869, quoted lawyer-poet John Godfrey Saxe that “Laws, like sausages, cease to inspire respect in proportion as we know how they are made,” and this may be the true origin of the saying.

Ralph Keyes found an attribution to John Godfrey Saxe on the 29th of April 1869.<sup>5</sup> The following is a slightly earlier cite dated March 27th that accords with the thesis of Fred Shapiro and Ralph Keyes that Saxe may be the crafter of the aphorism:<sup>6</sup>

“Laws,” says that illustrious rhymer, Mr. John Godfrey Saxe, “like sausages, cease to inspire respect in proportion as we know how they are made;” and we fancy it is much the same with impeachment trials.

Why was the quotation assigned to Otto von Bismarck? Bismarck is more famous than Saxe, and quotes are sometimes credited to greater luminaries. But there is another possible reason. The researcher John Baker found a remarkable anecdote about

Bismarck that emphasizes the unpalatable nature of some sausages. This story was repeated for decades and may have popularly connected Bismarck with sausages. The tale recounts a proposed duel between Otto von Bismarck and the scientist Rudolf Virchow that would have used sausages as the weapon of choice. Baker noted that the story “goes back at least to A.H. Miles, *One Thousand and One Anecdotes* (1895).” In 1867 a South Carolina newspaper printed a version of the anecdote:<sup>7</sup>

A Berlin journal relates that the famous Bismarck once challenged Dr. Virchow for offensive language used in parliamentary debate. The learned doctor was at that time engaged in investigations relating to trichinosis. He is said to have thus replied to the messenger who bore Bismarck’s challenge: “My arms; there they are—those two sausages. One of them is full of trichinae; the other is pure. Let his Excellency breakfast with me. We will eat the sausages; and he shall take his choice of them.”

Adapted from article by Quote Investigator, “Laws Are Like Sausages. Better Not To See Them Being Made,” posted on July 8, 2010 (available at <http://quoteinvestigator.com/2010/07/08/laws-sausages/>).

### References:

1. Claudius O. Johnson, *Government in the United States* (New York: Thomas Y. Crowell, 1933), p. 321.
2. “Week in Washington: Strange Congress Grinds Into Gear,” *Ogden Standard-Examiner*, 1958 May 11, p. 3A.
3. Elizabeth Knowles, ed., *Oxford Dictionary of Quotations, Misquotations*, Oxford Reference Online. Oxford University Press.



**John Kulin, D.O.**  
Manahawkin, NJ  
*On the network since 2009*

**Your patients.**  
**Your practice.**

Your independence,  
with athenahealth.

**We focus on your financial success,**  
so you can keep your focus on patients.

...❖ Ask MedChi about the athenahealth integrated suite of services and special offers exclusive to MedChi members or visit [athenahealth.com/medchisusan](http://athenahealth.com/medchisusan)





# MedChi Insurance Agency, Inc.

Established by Physicians for Physicians

We know how to diagnose and treat your insurance & financial needs

Property & Liability:

- Medical Malpractice
- Workers Compensation
- Medical Office Insurance
- Employment Practices Liability
- Directors & Officers Liability
- Bonds (Fiduciary/Fidelity/Erisa)
- Personal Insurance (Home, Auto, Umbrella)

Employee Benefits:

- Medical, Dental, and Vision Coverage
- Group Life & Disability
- Section 125/Flex Spending Accounts

Find out if your medical practice is adequately insured

Call us today to schedule your "no obligation" insurance and financial review.

**410.539.6642 • 800.543.1262**



MedChi Insurance Agency, Inc.  
Insurance and Financial Services  
A subsidiary of MedChi, The Maryland State Medical Society

1204 Maryland Avenue  
Baltimore, Maryland 21201  
[www.medchiagency.com](http://www.medchiagency.com)

**MedChi**  
The Maryland State Medical Society

MedChi  
*The Maryland State Medical Society*  
1211 Cathedral St. ▲ Baltimore, MD 21201

Address Service Requested

Presorted Standard  
U.S. Postage  
PAID  
Pemit No. 48  
Merrifield, VA